



THESE COATS DESCRIBED ON PAGE 5

LIBRARY

 MONTGOMERY WORD . . . FALL & WINTER 

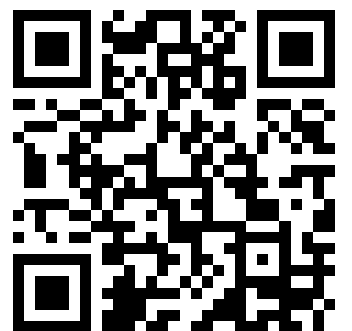
ALBANY • 1941-42

Digitized by Google

This is a reproduction of a library book that was digitized by Google as part of an ongoing effort to preserve the information in books and make it universally accessible.

Google™ books

<https://books.google.com>





YOUNG-LOOKING COMFORTABLE STYLES IN WOMEN'S AND LARGER WOMEN'S SIZES . . . ALL 100% AMERICAN COTTON

Youthful Coat Style in better quality tubfast Percalé. Buttons open entire front making it easy to wash and iron. Contrasting banding trims pretty neckline, front, cuffs and pockets. Tie-back sash. 2-in. hem. Colors: Copen Blue, Red or Aqua—each on white ground. Women's Sizes: 34, 36, 38, 40, 42, 44-in. bust. Larger Women's Sizes: 45, 47, 49, 51, 53-in. bust. Size Scale, Page 97. Ship. wt. 11 oz. 15 A 1730—State bust size and color in order. . . . Each 89c

Lace Trimmed Organdy Collar on a practical Coat Dress of better quality tubfast Percalé. Opens to hem. Full cut. 2 pockets. 2 skirt pleats. 1-inch hem. Colors: Rose, Copen Blue or Aqua—each with white dots. Ship. wt. each 12 oz. 15 A 1225—Women's Sizes: 32, 34, 36, 38, 40, 42, 44-in. bust. State bust size, color. Each \$1.00 15 A 1226—Larger Women's Sizes: 46, 48, 50, 52-in. bust. State bust size and color. Ea. 1.00

Popular Checks on a House Dress of better quality tubfast Percalé. 7-in. zipper fastens bodice. Stitching and piping on collar, cuffs, front and pockets. 2-in. hem. Colors: Navy Blue, Wine or Black—each with white checks. Women's Sizes: 34, 36, 38, 40, 42, 44-in. bust. Larger Women's Sizes: 45, 47, 49, 51, 53-in. bust. See Size Scale, Page 97. Ship. wt. 13 oz. 15 A 1729—State bust size and color in order. . . Each 1.00

A 20-inch zipper opens the front of this better quality tubfast Cotton Poplin Dress. Novelty neckline and set-in front belt. Adjustable tie-back sash. Wide rick-rack trim. 2 pockets. 2-in. hem. Ground Colors: Navy, Dusty Rose or Aqua—each with colorful print. Women's Sizes: 34, 36, 38, 40, 42, 44-in. bust. Larger Women's Sizes: 45, 47, 49, 51, 53-in. bust. Scale, Page 97. Ship. wt. 1 lb. 2 oz. 15 A 1727—State bust size and color in order. . . Each 1.49

New "Etched" Effect printed on tubfast Cotton Poplin—exclusive with Wards! Slenderizing Hooverette with full overlap. Becoming shawl collar has under-collar edging of fine lawn—embroidered scalloping. Ties in back. Roomy pocket. Colors: Copen Blue or Red—each with black "etching" on white. Women's Sizes: 34, 36, 38, 40, 42, 44-in. bust. Larger Women's Sizes: 45, 47, 49, 51, 53-in. Size Scale, Page 97. Ship. wt. 1 lb. 3 oz. 15 A 1728—State size, color. 1.49



APRONS THAT ADD ZEST TO YOUR HOUSEWORK . . . 100% AMERICAN COTTON

A Ruffled Bib Apron in tubfast Percalé. Fine choice for tea, hostess or utility wear! Binding in contrasting shade accents its attractive lines. There's a convenient little pocket, too. Ties in back. One size fits 32 to 38-inch bust. Colors: Copen Blue, Rose or Aqua—each with gay print. Ship. wt. ea. 6 oz.; 3, 1 lb. 15 A 1452—State color. 3 for 54c; Each 19c

Coverall Apron in better quality tubfast Percalé. Colors: Red or Copen Blue—each with floral print. Ship. wt. 8 oz.; 2, 15 oz. 15 A 1761—Women's Sizes: Small (34 to 36-in. bust); Medium (38 to 40); Large (42 to 44). State size, color. Each 39c; 2 for 75c 15 A 1762—Larger Women's Sizes: 46 to 48-in. bust, 50 to 52-in. State size, color. 2 for 85c; . . . Ea. 44c

Scalloped Edges are new notes on this good-looking Apron of finest quality tubfast Percalé. Comes in rich colors. Fitted set-in waistband—ties in back. Full gathered skirt. 2 pockets. One size fits 30 to 36-inch bust. Colors: Red, Copen Blue or Maize—each on white. Ship. wt. 8 oz.; 2, 15 oz. 15 A 1765—State color. 2 for 75c; Each 39c

Pretty Pinafore Style in better quality tubfast Percalé. Neck buttons and sash ties in back for complete coverage. Coy shoulder ruffles. Pockets. Colors: Navy, Brown or Red—each with white checks. Sizes: Small (34 to 36-in. bust); Medium (38 to 40); Large (42 to 44). Ship. wt. each 9 oz.; 2, 1 lb. 1 oz. 15 A 1763—State size, color. 2 for 95c; . . . Ea. 49c

"Martha Washington" Coverall. Better quality tubfast Percalé trimmed with rick-rack. Won't show soil. Slips over the head; adjustable ties in back. Pockets. Ground Colors: Navy or Gray—each with tiny print. Women's Sizes: 38-40; 42-44, 46-48, 50-52, 54-56-in. bust. Ship. wt. each 11 oz.; two 1 lb. 5 oz. 15 A 1007—State size, color. 2 for \$1.35; Digitized by

MIRACLE VALUE

- Regular 98c Value for Set
- Better Quality Tubfast Percalé —100% American Cotton

Set of Three Aprons in gift box with glassine window. Set includes three colors: Rose, Copen Blue and Green (no choice). One size fits 32 to 38-in. bust. Ship. wt. 1 lb. 15 A 1764—Set of 3 for 79c

Women at Work



A—Sanforized Denim Work Outfit (fabric won't shrink more than 1%). Each piece is made for comfort and durability. The fine workmanship includes many features used in men's outfits: triple stitched seams, bar-tacking at points of strain for strength, metal buttons riveted on and roomy pockets. Ideal for farm, factory and defense work. Tub separately. Color: Indigo Blue.

Durable Utility Jacket. Collar buttons high or low. Two pockets. Sizes: 32, 34, 36, 38, 40, 42, 44-inch bust. 15 A 1704—State bust size. Ship. wt. 1 lb. Each..... 1.19

Bib Top Overalls. Adjustable suspenders. Sides button. 4 pockets. Sizes: 26, 28, 30, 32, 34, 36, 38-in. waist. 15 A 1703—State waist size. Ship. wt. 1 lb. 3 oz. Each..... 1.19

Band Top Slacks. (See small view). Back belt. Sides button. 2 pockets. Sizes: 26, 28, 30, 32, 34, 36, 38-inch waist. 15 A 1705—Ship. wt. 1 lb. 1 oz. State waist size. Each.... 1.09

B—Sanforized Cotton Sentry Cloth (1% Shrinkage). Dk. Green. Dk. Blue. Wash separately. 15 A 1757—Work Slacks. Sides unbutton. Abt. 41 in. long. Even Sizes: 26 to 38-in. waist. Ship. wt. 14 oz. State size, color 1.00

15 A 1758—Work Jacket. Hi-lo collar. Even Sizes: 32 to 44-in. bust. Ship. wt. 14 oz. State size and color.... 94¢

C—Mechanic's Suit in Sanforized Cotton Sentry Cloth (won't shrink more than 1% when washed). Fine for work or sports-wear. Fly-front conceals zipper. Set-in belt. Wash separately. Colors: Dark Blue or Dark Green. Sizes: 32, 34, 36, 38, 40, 42, 44-in. bust. Ship. wt. 1 lb. 6 oz.

15 A 1756—State size, color. Each.. 1.98

D—Bib Overalls in Sanforized Cotton Suiting—a good, heavy quality. (Fabric won't shrink more than 1%). Full coverage bib with set-in belt. Button-down back. 2 pockets. Wash separately. Color: Copen Blue only. Sizes: 26, 28, 30, 32, 34, 36, 38-in. waist. Ship. wt. 1 lb.

15 A 1759—State size..... 1.29

Work 'n' Play Suit to use for factory, farm or sports wear. In fine quality Sanforized Cotton Gabardine (fabric won't shrink more than 1%). Features brass buttons which open front, self-adjustable draw-string waist, 2 large pockets with buttoned flaps.

Colors: Off-White, Bluestone, or Dark Green. Ship. wt. 1 lb. 12 oz. Sizes: 12, 14, 16, 18, 20, 22 (fits 30 to 40-inch bust).

15 A 1760—State size and color. Each.... 1.98

Canvas Work Glove. Striped Gray Cotton. Navy Blue Suedine cuff—piped in Red, trimmed with a patriotic motif in Red, White and Blue. For factory work, gardening, etc. Washable. Ship. wt. pair 4 oz.; 3 prs. 11 oz.

30 A 4515—Pair..... 35¢ 3 Pairs \$1.00



E—Nautical Smock with a smart sailor collar (see small view), novelty buttons, white banding, and applied anchor trim. Regular value \$1.98. Tubfast Cotton Poplin. Pleats in front and back (good for maternity wear). Abt. 32 in. long. Colors: Navy or Wine. Misses' Sizes: 12, 14, 16, 18, 20 (fits 30 to 38-inch bust). Ship. wt. 12 oz. 15 A 1732—State size, color. Ea.... 1.00

F—Paisley Print Smock in standard quality tubfast Cotton Percalé. Worth 89¢! Youthful collar and pockets are accented with binding. Yoke in back and front for fullness. Short sleeves. About 30 inches long. Colors: Copen Blue, Lilac or Green Paisley. Misses' Sizes: 12, 14, 16, 18, 20, 22 (fits 30 to 40-inch bust). Ship. wt. 9 oz. 15 A 1734—State size, color. Ea.... 69¢

G—Form-fitting Style with princess lines front and back. Comes in washable Cotton Broadcloth with cord piping outlining collar and pockets. Long full sleeves with buttoned cuffs. Smock is about 32 in. long. Color: Copen Blue or Black predominating. Misses' Sizes: 12, 14, 16, 18, 20, 22 (fits 30 to 40-in. bust). Ship. wt. 10 oz. 15 A 1486—State size, color. Ea.... 1.00

H—Pretty Dahlia Print on fine quality tubfast Cotton Broadcloth. Interesting round neckline and front yoke have rickrack trim. Gathers at front and back yokes. Long full sleeves have snug cuffs. 2 pouch pockets. Abt. 32 in. long. Color: Colorful dahlia print on white ground. Misses' Sizes: 12, 14, 16, 18, 20, 22 (fits 30 to 40-in. bust). Ship. wt. 12 oz. 15 A 1733—State size. Ea..... 89¢

J—French type Rayon Crepe—a fine quality washable fabric in a Smock that is pleated front and back. Flattering neck. 2 pockets. Long sleeves. Smock is about 32 inches long. Fine for maternity wear. Ground Colors: Black, Wine or Copen Blue—each with photographic prints. Misses' Sizes: 12, 14, 16, 18, 20 (fits 30 to 38-inch bust). Ship. wt. 1 lb. 1 oz. 15 A 1731—State size, color. Ea.... 1.79



120 WARDS CB AS

SAVE MONEY . . . Buy 6 Months' Supply of Work Clothing and Uniforms Now While Our Low Cost Materials are Available . . . See Time Payment Plan Inside Back Cover.



Full Length Tucked Front for nice lines on a Utility Uniform of Pre-shrunk Cotton Poplin (fabric won't shrink over 3%). A convenient 7-in. zipper opens the neckline. Notched collar, cuffs, Shoulder yoke has gathers below it for soft bodice fullness. 2 pockets. 2-in. hem. Tubfast.

Colors: All White; Copen Blue with white trim; or Green with white trim.

Misses' Sizes: 12, 14, 16, 18, 20, 22 (fits 30 to 40-in. bust). See Size Scale, Page 76. Ship. wt. 13 oz.

15 A 1753—State size and color in order Each 1.00

Removable Shank Buttons open to the waistline and close belt on this Tubfast Cotton Poplin Utility Uniform. Easy to launder—easy to iron! Well cut with yoke gathers giving fullness over bust. Two convenient pockets—one on bodice—one on skirt. 2-inch hem.

Colors: All White; Copen Blue with white trim; or Green with white trim.

Women's Sizes: 32, 34, 36, 38, 40, 42, 44-in. bust. See Size Scale on Page 76. Ship. wt. 13 oz.

15 A 1754—State size and color in order Each 1.00

Wards Best Utility Uniform in fine quality Sanforized tubfast Cotton Linene. (Fabric won't shrink more than 1%). Removable shank buttons open the entire front—making it easy to get into and easy to iron. Has princess lines both front and back for good fit. 2 roomy pockets. 3-in. adjustable hem.

Colors: Copen Blue with white, Green with white, Gray with red, Tan with brown, or All White.

Women's Sizes: 32, 34, 36, 38, 40, 42, 44-in. bust. Check the Size Scale on Page 76. Ship. wt. 1 lb. 2 oz.

15 A 1432—State size, color 1.69

No Ironing Necessary after washing this crinkly Cotton Seersucker Utility Uniform! Launder with ease and wears very well. Removable shank buttons open to hem—quick to slip into! Front and back yokes for comfort in bodice. Darts at waist for better fit. 2 big pockets. 2-inch hem.

Colors: All White, Coral with white, or Copen Blue with white.

Sizes: 32, 34, 36, 38, 40, 42, 44-in. bust. Check measurements on Size Scale, Page 76. Ship. wt. 1 lb.

15 A 1497—State size and color in order Each 1.39

Contrasting Criss-Cross Binding trims the collar, cuffs and pockets of this smoothly-styled Utility Dress. It may be worn as uniform or frock. Easy-to-fasten 7-inch zipper closes front. Tubfast Cotton Linene. Cut on your favorite princess lines—very flattering to the figure! Tie-back sash for snug waist. 2-inch hem.

Colors: Copen Blue or Light Aqua—each with white trimming.

Sizes: 12, 14, 16, 18, 20, 22 (fits 30 to 40-in. bust). Check the Size Scale on Page 76. Ship. wt. 15 oz.

15 A 1755—State size, color 1.00

Wards outstanding

PROFESSIONAL NURSES' UNIFORMS

Choice of 3 Washable Fabrics: Rayon Doeskin (Acetate Rayon)—Wards finest and newest Uniform Fabric—smooth, light-weight, needs no starching, less than 1% shrinkage. **Rayon Sharkskin**—crisp and sleek, sheds dust, resists wrinkles. **Sanforized Poplin**—fine sturdy Cotton with mercerized finish (won't shrink more than 1%). All White Uniforms Come in Sanitary Glassine Bags.

5% DISCOUNT ON 6 OR MORE UNIFORMS BOUGHT AT ONE TIME

K-16-inch Zipper concealed in front. Fitted princess lines. Removable shank buttons—adjust at sides. 3 pockets with flaps. 4-in. hem. Long sleeves have rip-proof plackets.

Color: White only.

Sizes: 30, 32, 34, 36, 38, 40, 42, 44-in. bust. See Size Scale, Page 76. Ship. wt. ea. 1 lb. 4 oz.; 2, 2 lbs. 6 oz.

Sanforized Cotton Poplin

15 A 1747—Short Sleeves. 15 A 1748—Long Sleeves. Please state size. 2 for \$3.89; Ea. 1.98

Rayon Sharkskin

15 A 1749—Short Sleeves. 15 A 1750—Long Sleeves. Please state size. 2 for \$5.79; Ea. 2.98

Rayon Doeskin

D15 A1751—Short Sleeves. D15 A1752—Long Sleeves. Please state size. 2 for \$7.75; Ea. 3.98

L-Hi-lo Neckline. 3 patch pockets have button flaps. Buttons are removable for laundering. Set-in belt at waistline. 4-in. hem. Long sleeves have rip-proof plackets.

Color: White only.

Sizes: 30, 32, 34, 36, 38, 40, 42, 44-in. bust. See Size Scale on Page 76. Ship. wt. 1 lb. 7 oz.; 2, 2 lbs. 12 oz.

Sanforized Cotton Poplin

15 A 1741—Short Sleeves. 15 A 1742—Long Sleeves. Please state size. 2 for \$3.89; Ea. 1.98

Rayon Sharkskin

15 A 1743—Short Sleeves. 15 A 1744—Long Sleeves. Please state size. 2 for \$5.79; Ea. 2.98

Rayon Doeskin

D15 A 1745—Short Sleeves. D15 A 1746—Long Sleeves. Please state size. 2 for \$7.75; Ea. 3.98

M-16-inch zipper on smartly tucked front. Set-in waistband. 2 patch pockets with novel flaps. Notched collar. 4-inch adjustable hem. Long sleeves have rip-proof plackets.

Color: White only.

Sizes: 30, 32, 34, 36, 38, 40, 42, 44-in. bust. See Size Scale, Page 76. Ship. wt. 1 lb. 3 oz.; 2, 2 lbs. 4 oz.

Sanforized Cotton Poplin

15 A 1735—Short Sleeves. 15 A 1736—Long Sleeves. Please state size. 2 for \$3.89; Ea. 1.98

Rayon Sharkskin

15 A 1737—Short Sleeves. 15 A 1738—Long Sleeves. Please state size. 2 for \$5.79; Ea. 2.98

Rayon Doeskin

D15 A 1739—Short Sleeves. D15 A 1740—Long Sleeves. Please state size. 2 for \$7.75; Ea. 3.98



Professional Cap in White Nurses' Cloth. Opens flat for easier laundering. Adjustable 4-button closing in back assures proper fit.

15 A 1122—Ship. wt. each 3 oz.; three 7 oz. Three for 75c. Each 27c

Doeskin Uniforms Mailed from Chicago. You pay postage from Wards nearest Mail Order House

ALL COTTONS ON THESE TWO PAGES ARE 100% AMERICAN COTTON



PIONEERS

Extra Heavy 8-oz. Denim
Sanforized to Stay in Fit

75c And
EA. Up

Overalls and Jacket

Pioneers . . . most popular because they give longer wear, are cut with more fullness than any of our boys' overalls, and are priced for economy.

Extra Heavy 8-oz. Blue Denim . . . heavier, more tightly twisted threads for strength and wear. Sanforized . . . less than 1% shrinkage.

Strong Construction . . . Rip-proofed; triple sewn seams, bar-tacks. Overalls have full bib for protection, 7 pockets. Jacket has 2-button adjustable collar and cuffs, 4 pockets.

Boys' Pioneer Overalls

To measure see at right. Ship. wt. 1 lb. 14 oz.

42 A 6032—High Back Overalls

42 A 6031—Low Back Overalls

Sizes: 4, 6, 8. State size . . . 75c

Sizes: 10, 12, 14, 16, 18. State size . . . 82c

Boys' Pioneer Jackets

To measure see at right. Ship. wt. 1 lb. 9 oz.

42 A 6030—Blue Denim Jacket

Sizes: Band 10. State size . . . 75c

Sizes: 12, 14, 16, 18. State size . . . 82c

How to Compare Denim Weights

Denim Yardage is 28 in. Wide
All 100% American Cotton.

2.45 Weight Denim means that it takes 2.45 Yards to make a pound . . . or 6½ oz. per Yard.

2.20 Weight Denim means that it takes 2.20 Yards to make a pound . . . or 7¼ oz. per Yd.

8-oz. Denim is figured on an ounce per yard basis. It weighs 8 oz. per Yard.

A—High Back Overalls.
B—Low Back Overalls.
Elastic Suspender Inserts.



Thrifty Bargains in Sturdy Wearing Blue Denim

High Back **44c** Med. wt.

Band Tops **59c** Med. wt.

Strong, triple sewn main seams. Husky bar-tacks, wide flat 1-pc. suspenders, 3 strong pockets . . . a real bargain. Full cut, not Sanforized. Even Sizes: 4 to 12. State size. See Chart below. Ship. wt. 15 oz.
42 A 6076—Blue Denim Overalls 44c

Adjustable back strap for good fit. Snap fastened waistband. Bar-tack won't scratch furniture. 5 pocket. Full cut sizes, not Sanforized. Even Sizes: 6 to 18. State size. See Chart below. Ship. wt. 1 lb. 7 oz.
42 A 5818—Blue Denim Bandtops 59c

How to Measure for Boys' Overalls and Jackets

Jackets, Bib and Band Overalls: Measure height without shoes. Measure waist over trousers without belt. Measure chest over sweater with tape well up under arms. Be sure garment comes in size wanted.

IF HIS HEIGHT IS	IF HIS CHEST IS	IF HIS WAIST IS	ORDER SIZE
Under 40 in.	21 to 23 in.	21 to 23 in.	4
40 to 44 in.	22½ to 24½ in.	22 to 24 in.	6
45 to 49 in.	24 to 26 in.	23 to 25 in.	8
50 to 53 in.	25½ to 27½ in.	24 to 26 in.	10
54 to 57 in.	27 to 29 in.	25 to 27 in.	12
58 to 61 in.	28½ to 30½ in.	26 to 28 in.	14
62 to 65 in.	30 to 32 in.	27 to 29 in.	16
65½ to 68 in.	32 to 34 in.	28 to 30 in.	18

HOMESTEADERS

HEAVY 2.20 WT. DENIM
WEIGHS 7¼ OZ. PER YARD

Sanforized Homesteaders
1% Fabric Shrinkage

Overalls or Jacket **59c** And
EA. Up

This heavy deep dyed Blue Denim is exceeded in strength only by our 8-oz. Denim Overalls. It is strong enough for most rough use. Triple sewn seams, bar-tacks, rust-proofed, riveted buttons. Flat-riding suspenders, full bib, 7 pockets. Full cut Sanforized sizes. Jacket has 1-button adjustable collar and cuffs, 4 big pockets. To measure: see above at right. Ship. wt. 1 lb. 9 oz. State size.

42 A 6066—High Back Overalls

42 A 6065—Coat Style Jacket

Sizes: 4, 6, 8 . . . 59c

Sizes: 10, 12, 14, 16 . . . 68c

2.20 Wt. Blue Denim
Not Sanforized-shrunk

Overalls only **55c** And
EA. Up

Heavy, 2.20 Wt. Blue Denim in Highback Overalls. Full cut, order your boy's right size. To Measure see chart above. Ship. wt. 1 lb. 9 oz.

Be sure to state size in order.

42 A 6068—Blue Denim

Sizes: 4, 6, 8. Each . . . 55c

Sizes: 10, 12, 14, 16. Ea. . . 62c

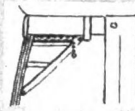
High Back



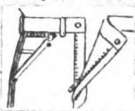
Your Boy can use at least 2 pairs of Overalls . . . they save his good clothes. You can get them at once with Wards Time Payment Plan. See Inside of Back Cover for Full Details.

Z-I-P-S-T-E-R-S

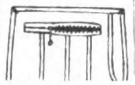
New Streamlined
Overalls for Boys



Watch Pocket
Zips Closed



Slide Fastened
Front Closure



Slide Fastened
Bib Pocket



Zipper Bib Pocket Overalls

Zip Pocket, Zip Fly Bandtops

Sanforized 8-oz. Denim **79c** AND UP

Sanforized 8-oz. Denim **95c**

- Extra Heavy 8-oz. Deep Indigo Dyed Blue Denim.
- Designed with a New Fast Action Zip Bib Pocket.
- Sanforized—has Less than 1% Fabric Shrinkage.
- Full Cut, Comfortable Sizes Strongly Constructed.

Modern Overalls with modern, practical features. The same Sanforized, heavy 8-oz. Blue Denim as our Pioneers above, but with a convenient zipper pocket on the full bib front. A handy safety deposit pocket for the small things a boy carries.

The main seams are triple stitched and staunchly bar-tacked. Rust-proofed, riveted metal buttons. Wide, flat adjustable suspenders have easy to hook, rust-proofed buckles. 5 other big pockets.

State sizes. See Chart above. Ship. wt. 1 lb. 11 oz.

42 A 6003—Boys' High Back Overalls

Sizes: 4, 6, 8. State size . . . 79c

Sizes: 10, 12, 14, 16, 18. State size . . . 85c

- Extra Heavy 8-oz. Denim Bandtops Cut in Full Sizes.
- Easy Closing, Self Locking Zipper Fly for Neatest.
- Zipper Top Watch Pocket that Keeps Valuables Safe.
- Strap and Buckle Adjustment in Back for Right Fit.

Our finest boys' Bandtops . . . action cut with action features. Tightly woven, deep dyed Blue Denim is Sanforized Shrunk to keep the fine fit of its full cut sizes . . . there's less than 1% fabric shrinkage. The zipper fly always closes securely, looks neater.

Triple stitched seams with heavy thread bar-tacks in back that won't scratch furniture; copper-rivets in front. 4 other deep strong pockets besides the safety zipper top pocket. Securely bar-tacked belt loops that won't pull off easily.

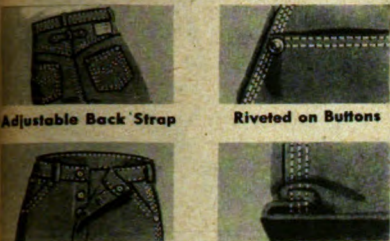
Even Sizes: 6 to 18. See How to Measure and Size Chart above. Ship. wt. 1 lb. 7 oz.

42 A 6060—Bandtops. State size . . . 95c

40 WARDS

COPPER RIVETED 101's

Your Choice of Two Weights of Denim



22 Big Copper Rivets Triple Stitched Seams

- All 101's Are Constructed of 100% American Cotton.
- Rust-proofed Copper Rivets at Strain Points.
- Western Style Yoke Back with Adjustable Strap.
- Rip-proofed seams of triple stitched cord thread.
- Full cut sizes that fit for comfort in action.

Sanforized-Shrunk 8-oz. Denim

Extra Strength **75c** Extra Wear

All 101 Features above in extra strong heavy weight, deep Blue Denim, Sanforized, less than 1% shrinkage. 5 deep pockets. Sturdy belt loops. Even Sizes: 6 to 18. See How to Measure and Size Chart on the facing page. Ship. wt. 1 lb. 8 oz. 42 A 6053—Blue Denim. State size.....75c

Medium Weight Blue Denim

Full Cut **57c** Not Sanforized

All 101 Features . . . not so heavy as better Band-tops above, this Denim weighs 6½ oz. per yard. More strength and wear than most at this price. Even Sizes: 6 to 18. See How to Measure and size Chart on the facing page. Ship. wt. 1 lb. 6 oz. 42 A 6058—Blue Denim. State size.....57c



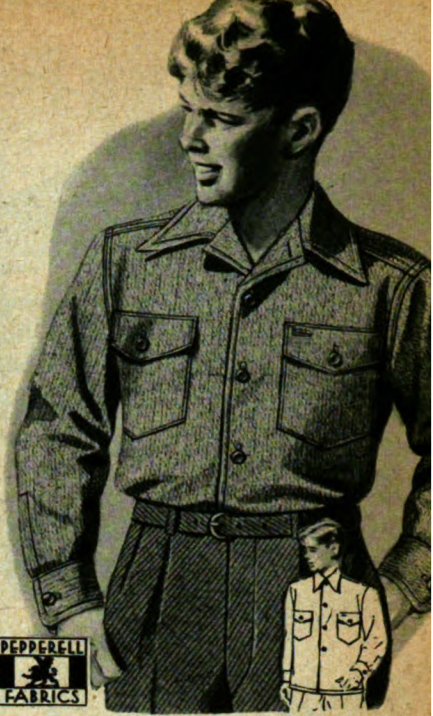
Vat Dyed FAST COLOR

Pepperell Skytones Sanforized-Shrunk

74c 3 for \$2.17

Same as Men's Shirts Shown in Full Color on Page 438

- Handsome 100% American Cotton Twill.
- Rich Colors Won't Fade or Run.
- A sturdy, soft-finished All-Purpose Shirt made of a famous Pepperell fabric . . . a long-wearing Sanforized Cotton Twill that washes well, won't shrink over 1%. Interlined collar can be worn open or closed. Bottom can be worn in or out of trousers. Double stitched main seams and one-piece sleeve facings won't tear out. Matching four-hole buttons. Button-down flap pockets.
- Colors: Blue, Green or Tan.
- Sizes: 6, 8, 10, 12, 14, 16. To measure for shirts, see Page 312. Ship. wt. each 10 oz.; three 1 lb. 12 oz. State size and color.
- 35 A 4636—Each 74c; Three, \$2.17



HOMESTEADER JR.

Sanforized Med. Heavy Chambray or Covert

54c 3 for \$1.59

Made like Homesteader Work Shirts for men, Page 439. 100% American Cotton fabric won't shrink over 1%. Triple sewn main seams, one-piece sleeve facings. Double shoulder yokes. Two button-through pockets, one with handy pencil slip.

- Little Boys' Sizes: 6, 8, 10, 12.
- Big Boys' Neck Sizes: 12½, 13, 13½, 14, 14½. To Measure, see Page 346. Ship. wt. ea. 10 oz.; 3, 1 lb. 12 oz.
- 35 A 4616—Blue Chambray
- 35 A 4625—Gray Cotton Covert
- State size. Ea. 54c; Three for. \$1.59



Orig. Homesteader Jrs. Medium Heavy Weight

45c 3 for \$1.32

Made of the same tough 100% American Cotton fabrics and tailoring as Shirts above but not Sanforized-Shrunk. Full cut to allow for shrinkage.

- Little Boys' Sizes: 6, 8, 10, 12.
- Big Boys' Neck Sizes: 12½, 13, 13½, 14, 14½ in. Ship. wt. 10 oz.; 3, 1 lb. 12 oz.
- 35 A 4613—Blue or Gray Covert
- 35 A 4605—Blue Chambray
- State size, color. Ea. 45c; 3 for \$1.32

Thrft Quality Chambray

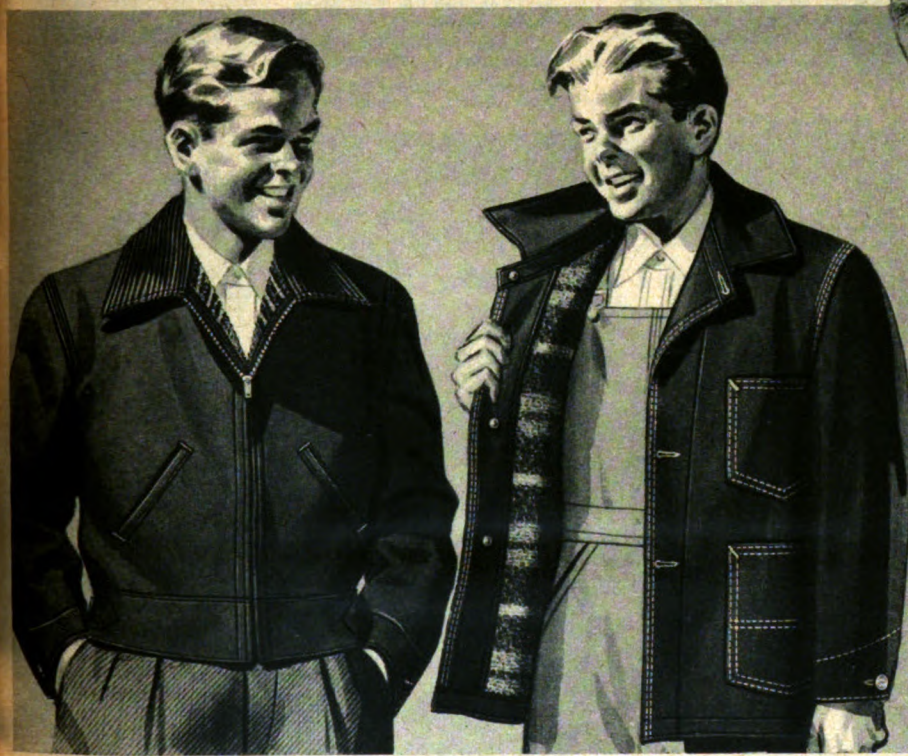
39c 3 for \$1.15

Not as heavy as Wards Original Homesteader Jrs. above, but practical for everyday wear. Medium weight Blue Chambray, (100% American Cotton), full cut. Triple main seams. Little Boys' Sizes: 6, 8, 10, 12. Big Boys' Neck Sizes: 12½, 13, 13½, 14, 14½ in. To Measure see Page 346. Ship. wt. each 9 oz.; 3, 1 lb. 9 oz. 35 A 4600—State size. Ea. 39c; 3, \$1.15



CB WARDS 341 AS

WARM BLANKET LININGS



Zip Front Cossack Jacket

1.44

- 100% American Cotton Jacket of Medium Wt. Denim with a Warm 14-oz. Cotton Blanket Lining.
- Full Length, Slide Fastened Front Closure.
- Comfortable, Navy Blue Corduroy Collar.
- All boys like it because of its Cossack length and its trim, full cut, fit that allows active freedom. They like the quick zip front, warm collar and the 2 muff pockets. It has adjustable side straps, triple sewn seams and bar-tacks.
- Even Sizes: 6 to 18. To Measure see facing page. Ship. wt. 1 lb. 10 oz.
- 42 A 6351—Blue Denim. State size. \$1.44

Homesteader Coat

1.29

- Strong, Tightly Woven, 2.20 Wt. Blue Denim.
- Extra Warm 16-oz. Blanket Cloth Lining of 25% Reused Wool, the Rest is Strong Cotton.
- 4 Pockets, one with a Button-through Flap.
- Made to keep a boy snug and warm at outdoor play or chores. The heavy blanket lining is stitched through the body seams to prevent sag. Strong, 2.20 wt. Denim with triple sewn seams and heavy bar-tacks. Generous full sizes.
- Even Sizes: 6 to 18. To Measure see facing page. Ship. wt. 2 lbs. 8 oz.
- 42 A 6353—Blue Denim. State size. \$1.29

Sanforized Gabardine

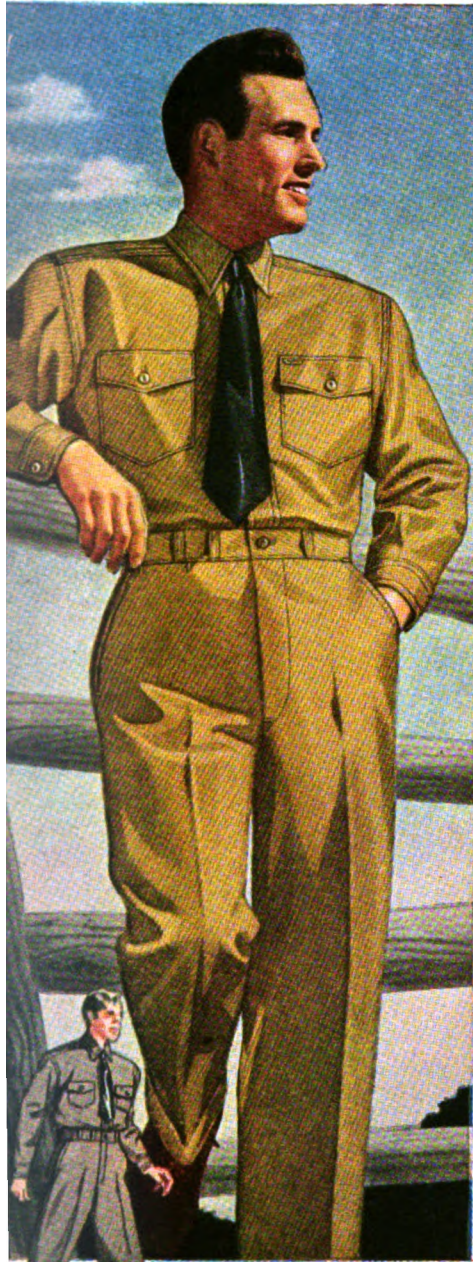
Fabric Can't Shrink More Than 1% **85c** 2 for \$1.65

- Vat-Dyed Colors Won't Fade when Washed.
- Mercerized for Good-Looking Lustrous Finish.
- Easy to Wash . . . Always Keeps its Perfect Fit.
- Triple Main Seams; One-Piece Sleeve Facings.
- Tightly woven 100% American Cotton Gabardine . . . all the neat appearance of a dress shirt combined with the wear resistant strength of a sturdy work shirt. Strong double shoulder yokes. Neat interlined collar. Matching buttons securely sewn. Two button-flap bellows pockets. Long tails stay tucked in—won't ride out.
- Colors: Medium Blue, Medium Green or Tan.
- Little Boys' Sizes: 6, 8, 10, 12. To Measure for these Shirts, see Chart A, on Page 346.
- Big Boys' Neck Sizes: 12½, 13, 13½, 14, 14½ in. To Measure Shirts, see Chart B, Page 346. Ship. wt. each 15 oz.; two 1 lb. 13 oz.
- 35 A 4635—State size, color. Ea. 85c; 2, \$1.65

You'll Find Economy in Wards Time Payment Plan
Play clothes and chore clothes will save your boy's good clothes. You can outfit him at once for Dress or for Play with Wards Time Payment Plan. It's so easy . . . any \$10 order establishes an account . . . only \$2 Down and \$2 Monthly. See Inside Back Cover.

SANFORIZED OUTFITS .. keep appearing

PERMANENT COLORS . . . VAT DYED, WON'T CHANGE OR FADE ★ PERMANENT FIT SANFORIZED-SHIRT



ARMY TWILL

4.48

Shirt . . . \$2.25 Trousers . . . \$2.37

Meets Government Specifications

The original, Genuine Army Twill . . . first choice of thousands of service men. Woven of long staple, 100% American 2-ply combed Cotton yarns . . . it has high tensile strength for long, hard wear. Mercerized for rich appearance, it is Sanforized, and colorfast.

Shirts have Dress shirt type collars, 7 pearl button front, rip-proof sleeve facings, 2 big extra capacity pockets. Long tails stay in.

Trousers have 5 Roomy pockets of heavy boat-sail drill. Well sewn suspender and fly buttons. Strong belt loops. 20-in. cuff bottoms.

Shirt Sizes: 14, 14½, 15, 15½, 16, 16½, 17-in. neck. Ship. wt. ea. 1 lb. 9 oz. State neck size.

Trouser Sizes: See scale on opposite page. State waist, inseam sizes. Ship. wt. 1 lb. 10 oz.

For Outfit: State neck size of shirt, waist and inseam sizes of trousers. Ship. wt. 3 lbs.

Army (Medium) Tan Twill. Sizes Above.

42 A 4029—Two-Piece Outfit. State sizes. \$4.48

42 A 4024—Shirt only. State size . . . \$2.25

42 A 4026—Trousers only. State sizes . . . \$2.37

Harvest (Smoke Color). Sizes Above.

42 A 4030—2-Piece Outfit. State sizes. \$4.48

42 A 4024—Shirt only. State size . . . \$2.25

42 A 4027—Trousers only. State sizes. \$2.37



BOULDERCORD

2.98 Jacket, Trousers or Breeches

Lighter Weight Shirt \$1.98

Heavy 10-oz. Cavalry Twill

Fast Color, Sanforized 2-ply 100% American Cotton yarns woven to give you matched strength, wear, color. The shirt is lighter 7-oz. wt. single ply yarn. Color: Forest Green.

Trousers: Talon zipper fly, 5 roomy pockets. Well sewn suspender buttons. 20-in. cuff bottoms. Sizes: See Scale on the opposite page. State waist and inseam. Ship. wt. 1 lb. 9 oz.

42 A 5149—Trousers . . . \$2.98

Jacket: Talon front, sports back. 2 pockets. Unlined. About 24½ inches in length. Sizes: Even 36 to 46-in. chest. State size. Ship. wt. each garment 1 lb. 15 oz.

42 A 5146—Jacket . . . \$2.98

Breeches: Patented Bulk-L-Breech with strap, buckle leg closing. Talon fly. Double seat, knees. Sizes: State waist, inseam. Ship. wt. 1 lb. 14 oz.

Waist 28|29|30|31|32|33|34|36|38|40|42

Inseam 23|23|23|25|25|25|25|25|25|25

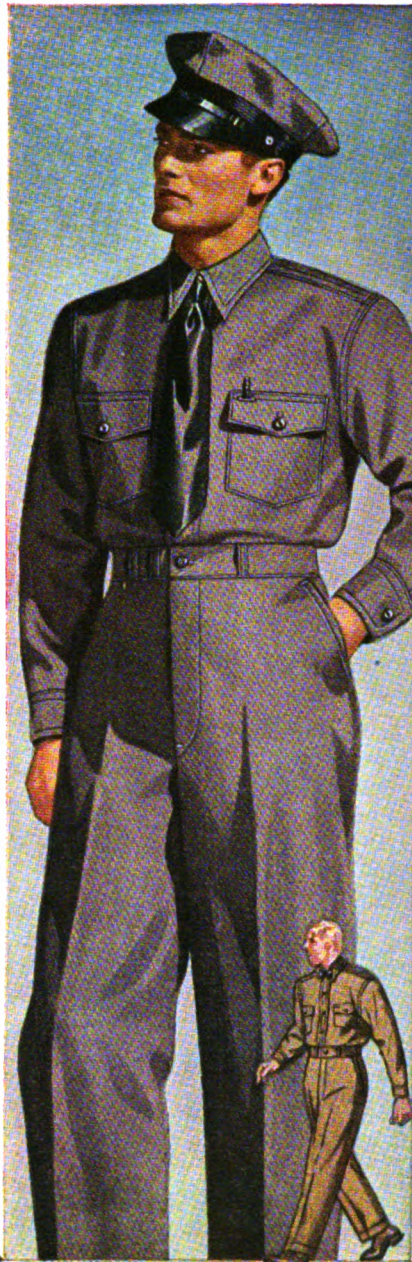
Choice 25|25|27|27|27|27|27|27|27|27

42 A 5147—Breeches \$2.98

Shirt: Lighter 7-oz. single ply Cavalry Twill, best weight for shirts. 2 pockets, button front.

Shirt Sizes: 14½, 15, 15½, 16, 16½, 17-in. neck. State neck-size. Ship. wt. 1 lb. 1 oz.

42 A 5148—Shirt \$1.98



MEDIUM WEIGHT

2.34

Shirt . . . \$1.05 Trousers . . . \$1.39

Jean Shirt . . . Drill Trousers

It's low priced to save you more! Strong Sanforized 100% American Cotton Twills of the same weight and fabric strength as Herringbone Outfit on opposite page . . . for those who prefer a neat looking plain weave, Shirts are: Sturdy Cotton Jean with 7 pearl button front. Dress shirt type collar. Two-button flap pockets. Long tails stay in.

Trousers are: Heavier Cotton Drill, 5 boatsail drill pockets. Securely sewn belt loops and suspender buttons. 20-in. cuff bottoms.

Shirt Sizes: 14, 14½, 15, 15½, 16, 16½, 17-in. neck. State size. Ship. wt. each 1 lb.

Trouser Sizes: See Scale on opposite page. State both waist and inseam sizes. Ship. wt. each garment 1 lb. 10 oz.

For 2-Pc. Outfit. State neck, waist and inseam sizes. Ship. wt. 2 lbs. 8 oz.

Harvest (smoke color). Sizes Above.

42 A 4012—2-Pc. Outfit. State sizes. \$2.34

42 A 4006—Shirt only. State size . . . \$1.05

42 A 4009—Trousers only. State sizes. \$1.39

Texas (light) Tan. Sizes Above.

42 A 4011—2-Pc. Outfit. State sizes. \$2.34

42 A 4005—Shirt only. State size . . . \$1.05

42 A 4008—Trousers only. State sizes. \$1.39



LIGHTER WEIGHT

2.19

Shirt . . . \$1.00 Trousers . . . \$1.19

Jean Shirt . . . Drill Trouser

It's an ideal outfit for average jobs, for work at your hobby, or around your home. If you're stronger, heavier outfits, see other selection on these two pages. Plain weave 100% American Cotton Fabrics are colorfast and Sanforized. Shirts are: Strong Cotton Jean, 7 button front, dressy collar. 2 button flap pockets.

Trousers are: Heavier Cotton Drill, 5 pocket tough drill. Belt loops, fly buttons. 20-in. cuff bottoms. Shirt Sizes: 14, 14½, 15, 15½, 16, 16½, 17-in. neck. State neck size. Ship. wt. 1 lb.

Trouser Sizes: See Scale on opposite page. State waist, inseam. Ship. wt. 1 lb. 10 oz.

For Outfits: State neck size of shirt, waist and inseam of trousers. Ship. wt. 2 lbs.

Texas (light) Tan. Sizes Above.

42 A 4067—Two-Piece Outfit. State sizes. \$2.19

42 A 4061—Shirt only. State size . . . \$1.00

42 A 4064—Trousers only. State sizes. \$1.19

UNIFORM-CAPS FOR WARDS OUTFITS

Removable, washable crowns—sateen lined. Sizes: 6¾, 6¾, 7, 7¼, 7¼, 7¾, 7½, 7¾. State head size. Ship. wt. each 1 lb.

42 A 690—Texas (grayish) Green

42 A 687—Texas (light) Tan

42 A 688—Harvest (smoke color) \$1.19

Leather Bow Tie
25c
Already tied. The elastic adjusts to all neck sizes. Ship. wt. each 4 oz.
35 A 1765—Black. 25c

Black Rayon Tie
25c
Barathea four-in-hand. Cravenette processed . . . repels water. Ship. wt. 4 oz.
35 A 1764—Each. 25c



It Costs Little to Advertise With Wards Lettering Service
Height: Up to and including 2 inches. STYLES: Block or Script.
Colors: Red, Brown, Maroon, Yellow, Blue, Green, Orange.
Black. Print wording wanted, state color, style, height of letters.
To order, add 5 before article as (542 A 4012). Allow 3 days extra for delivery.
18 letters or less for back of garment. 49¢
Name over front pocket in 5 letters or less 10¢
Extra letters for front or back, Each 2¢

436 WARDS CB AS

... keep expenses down

... CAN'T SHRINK MORE THAN 1% IN LAUNDERING

These two pages match and reproduce as closely as is possible by modern printing methods.

For a selection of Western outfits send for our free Western style Riding Clothes Catalog.



WINDWARD GABARDINE WITH 3-WAY SHIRT

Two-Piece Outfit **3.49** Trousers Only \$1.87

Built for Service . . . Styled for All 'Round Wear

Specialty Constructed For Work or Sports — the new in-or-outer shirt can be worn 3 ways . . . as regular shirt, as sports shirt with collar open, or as a jacket outside of trousers.
Woven of Firm Yarns — extra strong, pure 100% American long staple Cotton throughout.
Reinforced Construction — reinforced at every strain point with husky bar-tacks. The smooth seams are felled . . . seams in trousers are serged and pressed open flat—won't fray, ravel.
Mercurized — giving the tightly woven fabric a rich, lustrous appearance.
Vet-Dyed and Sanforized — the true colors and full sizes will last the life of the outfit.
 Wear it often, wear it everywhere! It's a famous sportswear fabric with strong work outfit construction for long service at work or play. The firm twill weave will hold up longer and smart styling is more suitable for leisure wear than the Herringbone at right.
 Shirts are tailored with 3-in. side vents and 1-in. hem for 3-way wear. Coat style front, 2 button-flap pockets reinforced at corners, 2 button cuffs can be easily adjusted.
 Trousers are built with five pockets of boatsail drill — heaviest pocket fabric made. Strongly reinforced belt loops and fly buttons will not pull off. Neat 20-inch cuff bottoms.
Shirt Sizes: Small (14-14½-in. neck); Medium (15-15½); Large (16, 16½, 17). State neck size. Sleeve lengths in proportion to neck size.
Trouser Sizes: Waist 30, 32, 34, 36, 38, 40, 42, 44-inch. For inseam sizes, see below. State waist, inseam. Ship. wt. 1 lb. 7 oz.
Outfits. State neck size of shirt, waist and inseam sizes of trousers. Ship. wt. 2 lbs. 10 oz.

- Two-Piece Outfit—State Sizes**
 A 4096—Stone Blue (medium blue) \$3.49
 A 4098—Camel Tan (medium tan)
 A 4097—Grayish Green. Each. . . . \$3.49
- Trousers Only—State Sizes**
 42 A 4086—Stone Blue (medium blue) \$1.87
 42 A 4088—Camel Tan (medium tan)
 42 A 4087—Grayish Green. Each. . . . \$1.87

WOVEN-IN HERRINGBONE IN 3 FAVORITE COLORS

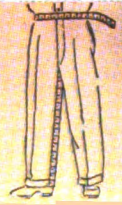
Two-Piece Outfit **2.48** Shirt Only \$1.09 Trousers Only \$1.49

For Long, Hard Wear and Neat Appearance

Herringbone Pattern Is Woven In — it is not printed or dyed on one side, but tightly woven right into the fabric itself . . . won't wear or rub off after seasons of steady service.
Woven of Firm Yarns — carefully loomed of thick 100% American Cotton yarns . . . the number of threads in the warp and filling are in proportion to give you balanced strength. Though matched in appearance, the trouser fabrics are heavier weight for extra strength.
Vet-Dyed and Sanforized — colors won't fade; sizes won't change after washing.
 At work or play you'll look better at less cost with this all-purpose outfit. Cut from carefully proportioned patterns, the full sizes look better and wear longer. Securely anchored bar-tacks, and rip proofed seams reinforce all strain points.
 Shirts are sturdy Cotton Jean Herringbone with seven pearl button front, smart dress shirt type collars. Two big button-flap pockets, 1 has a pencil slit. Long tails stay tucked in.
 Trousers are stronger Cotton Drill with 5 big pockets of tough boatsail drill. Sturdy, securely sewn belt loops, fly and suspender buttons will not pull off. About 20-inch cuff bottoms.
Shirt Sizes: 14, 14½, 15, 15½, 16, 16½, 17-in. neck. Sleeve lengths in proportion to neck size. State neck size. Ship. wt. 1 lb.
Trouser Sizes: Waist 30, 32, 34, 36, 38, 40, 42, 44 inch. For inseams see Size Scale below. State waist, inseam sizes. Ship. wt. 1 lb. 7 oz.
For Outfits. State neck size of shirt, waist and inseam sizes of trousers. Ship. wt. 2 lbs. 4 oz.

- Texas (grayish) Green**
 42 A 4022—2-Pc. Outfit \$2.48
 42 A 4016—Shirt only \$1.09
 42 A 4019—Trousers \$1.49
- Harvest (smoke color)**
 42 A 4021—2-Pc. Outfit \$2.48
 42 A 4015—Shirt only \$1.09
 42 A 4018—Trousers \$1.49
- Texas (light) Tan**
 42 A 4020—2-Pc. Outfit \$2.48
 42 A 4014—Shirt only \$1.09
 42 A 4017—Trousers \$1.49

To Measure for Shirts and Jackets
 Shirts: Take a shirt that fits properly. Measure collar from center of button to far end of buttonhole. The number of inches is your neck-size. Jackets: Measure around chest over vest. Order nearest even size.
 Be sure your size is listed.



To Measure Trousers
 Measure waist over trousers without belt. Inseam from crotch to desired length. Waist comes in even sizes. State waist, inseam.

Waist, inches	30	32	34	36	38	40	42	44
Each waist size comes only in the inseam lengths listed below that waist size in the chart at right.	29	29	29	30	30	30	30	30
	30	30	30	30	30	30	30	30
	31	31	31	31	31	31	31	31
	32	32	32	32	32	32	32	32
	33	33	33	33	33	33	33	33
	34	34	34	34	34	34	34	34
	36	36	36	36	36	36	36	36

Open a Credit Account
 Build your order to \$10 or more, pay monthly. Details on Inside Back Cover.

Now the Favorite of
Thousands of Men

Vat Dyed

**Fast Color
SKYTONES**



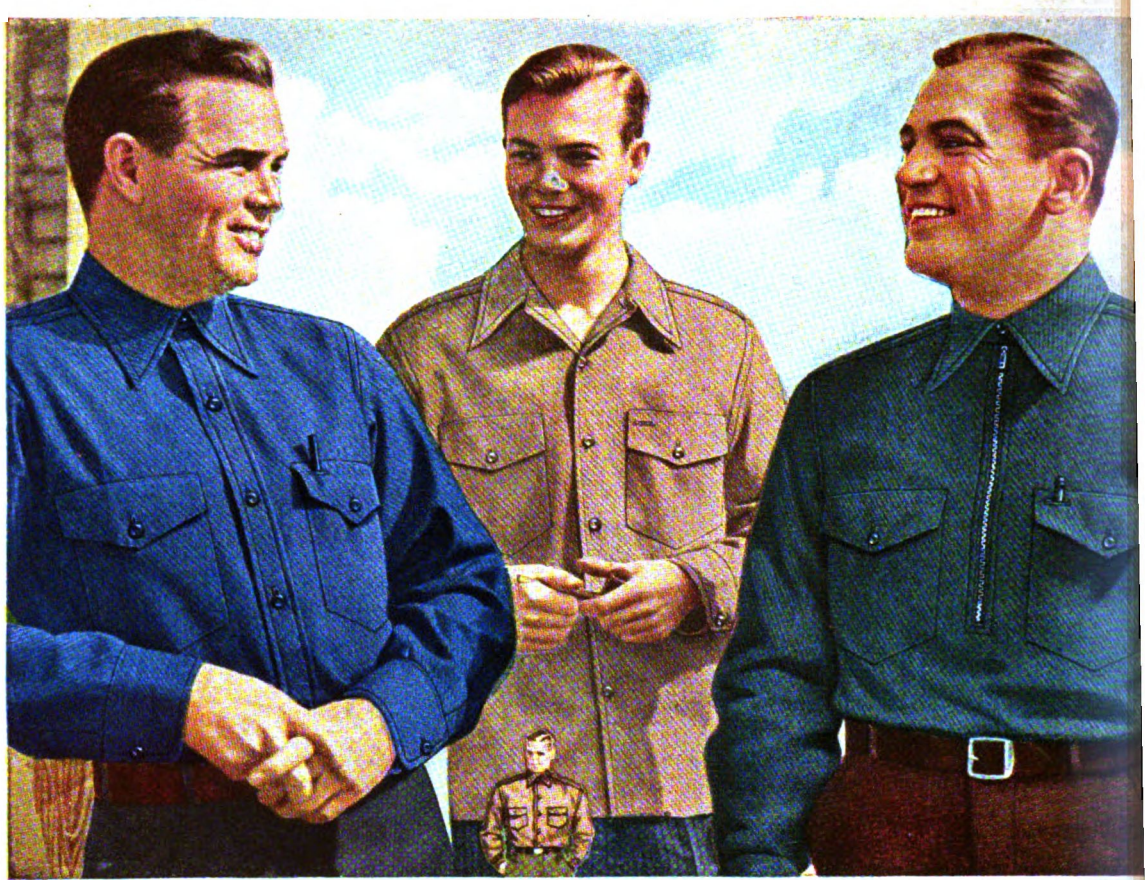
RICH VAT-DYED COLORS
Sunfast and Laundry-fast

SANFORIZED-SHRUNK
Residual Shrinkage 1%

LONG-LIFE TWILL
Exclusive with Wards

ROOMY CUT SIZES
Regular or Sports Styling

* No dyed fabrics are proof against fading from sunlight. "Sunfast" means dyes have a high resistance to sunlight. Their color should not alter objectionably during normal life of fabric. Colors on this page match actual colors of merchandise as closely as is possible with modern printing methods.



Here's the Fabric and Tailoring You Would Expect at 98c and \$1.25

THEY'RE MIRACLE VALUES AT ONLY

These new Shirts are making thousands of friends, and the reasons why are easy to see! They're made of a special fabric by Pepperell — just ask any woman what that name means in quality and dependability. In a handsome Sanforized 100% American Cotton Twill weave, with a soft, sports shirt type finish, yet it has all the wear defying strength you demand of a tough work shirt. The fast color Skytone shades go well with trousers or slacks of any color. Matching 4-hole buttons. Double main seams. Non-rip sleeve facing. Shaped flap pockets with convenient pencil slip. Comfortable interlined collar, shaped to fit the neck properly. Regular button front model comes in regular, tall and stout sizes; other models come in regular sizes only.

Colors: Blue, Tan or Green. Sizes below. State neck-size and color. To Measure See bottom of Page 440. Ship. wt. each shirt 13 oz.; three shirts 2 lbs. 4 oz.

Button Front Shirt Style
Regular Sizes: 14, 14½, 15, 15½, 16, 16½, 17-inch necks.
35 A 3008—Ea. 85c; 3 for \$2.50
Tall Sizes: 15, 15½, 16, 16½, 17, 17½, 18-inch necks.
35 A 3011—Ea. 97c; 3 for \$2.85
Stout Sizes: 17½, 18, 19, 20-in.
35 A 3012—Ea. 97c; 3 for \$2.65

In-or-Outer Style
Sports shirt styling, with two-way collar, seamless French button front. Wear bottom in or out of trousers or slacks.
Regular Sizes: 14, 14½, 15, 15½, 16, 16½, 17-in. necks. State neck-size, color.
35 A 3009—85c; 3 for... \$2.50

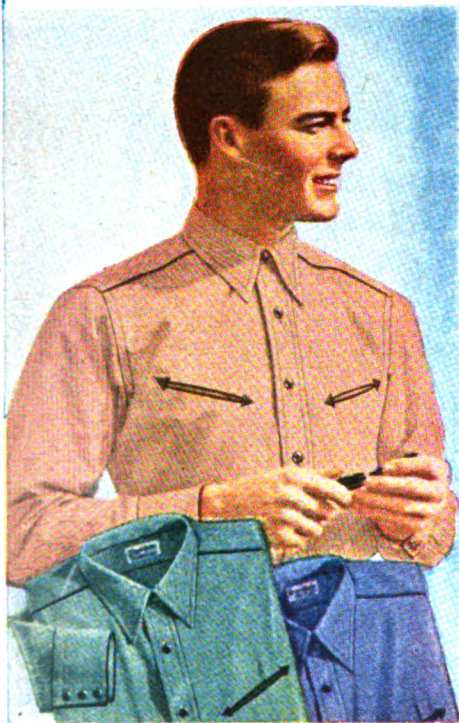
Rustless Zipper Front Style
Tailored in popular slip-over style, with convenient rust-proof slide fastener that locks securely in any position.
Regular Sizes: 14, 14½, 15, 15½, 16, 16½, 17-in. necks. State neck-size, color.
35 A 3010—97c; 3 for... \$2.85

85

Button Front
3 for \$2.50

97

Zipper Front
3 for \$2.85



Western Style Gabardine

Vat-Dyed Colors Stay New Looking... Sunfast and Tubfast

- 100% American Cotton Gabardine
- Pre-Shrunk for a Lasting Fit.
- Smart Contrasting Piping on the Pockets, Shoulder Fronts and Cuffs.

A trim, sturdy shirt with inverted pleat in back for easy action. Inverted pockets with arrow trim.

Colors: Tan, Green or Blue. Sizes: 14, 14½, 15, 15½, 16, 16½, 17-inch necks. Be sure to see How to Measure at bottom of Page 440. Ship. wt. each 12 oz.; two 1 lb. 7 oz. Please be sure to state neck-size and color.

35 A 3330—Each...\$1.79; Two for...\$3.50

1.79

2 for \$3.50



Dressy Shoulder Strap Shirt

Tight Weave Poplin Cotton Broadcloth

1.55 2 for \$3.00 **1.19** 2 for \$2.30

• A Favorite Style for Bus Drivers and Deliverymen. Those shoulder straps give a dress-up appearance, so important on jobs where you meet the public. 100% American Cotton fabrics, pre-shrunk for better fit (residual shrinkage 3%). Vat-dyed colors won't fade in sun or washing. Trim, comfortable soft collar in regular dress style. Two button-down flap pockets.

Colors: Suntan, Nickel Gray or Forest Green. Sizes: 14½, 15, 15½, 16, 16½, 17-inch necks. Ship. wt. ea. 13 oz.; two 1 lb. 9 oz. State neck-size, color.
35 A 3146—Strong Cotton Poplin. \$1.55; 2 for \$3.00
35 A 3177—Sturdy Broadcloth... \$1.19; 2 for \$2.30

WARDS FINE QUALITY UNIFORM SHIRTS

For Better Appearance on the Job... for longer wear. It's Easy to Buy the Best on Time. See Inside Back Cover for Details.



Sanforized Gabardine

Firm Textured... Mercerized for Luster

- Vat Dyed Colors, Sun and Tubfast.
- Comfortable Interlined Dress Type Collar.

Neat dress shirt appearance, combined with work shirt strength. 100% American Cotton fabric can't shrink over 1%. Large bellows flap pockets. Triple main seams.

Colors: Nickel Gray, Suntan or Navy. Sizes: 14½, 15, 15½, 16, 16½, 17-inch necks. How to Measure on Page 440. Ship. wt. ea. 1 lb. 4 oz.; two 2 lbs. 6 oz. State neck-size and color.

35 A 3195—Each \$1.29; 2 for...\$2.50

1.29

2 for \$2.50

Spun Rayon Gabardine

Heavy Weight, Crease-Resistant

- Soft, Smooth Weave Feels Like Wool.
- Made with Ward's Best Grade of Tailoring.

Practical, good-looking Western style, matching color shank buttons, shaped flap pockets, inverted back pleat easy action. Full cut... wash separate.

Colors: Maroon, Tan or Green. Sizes: 14½, 15, 15½, 16, 16½, 17-inch necks. Ship. wt. ea. 1 lb. 6 oz.; two 2 lbs. 10 oz. Be sure to state neck-size and color.

35 A 3199—Each \$1.98; 2 for...\$3.96

1.9

2 for \$3.96

138 WARDS CB AS

STANDARD HOMESTEADERS

for steady day-in, day-out service—SANFORIZED-SHRUNK



Closely Woven Medium Heavy Wt. Cotton Fabrics

Button Front Style
Chambray or Covert

Zipper Front
Cotton Covert

65c

82c

3 for \$1.89

3 for \$2.40

They're among Wards fastest selling Work Shirts, designed to give you long, satisfying service on all average jobs. Made over full, roomy patterns in your choice of button or zipper front style. Sanforizing strengthens the fabric and assures a permanent, perfect fit; the 100% American Cotton fabrics can't shrink more than 1% no matter how long you wear the shirt or how many times it is washed.

Made with Wards Quality Tailoring

Two large button-through pockets, one with convenient pencil slip. Triple sewn main seams will not rip. Long wearing dress-type collar is interlined for neat, comfortable fit. Non-rip 1-pc. sleeve facings. Rust-proof buttons, sewn on to stay. Rounded corner cuffs are slow to fray. Double shoulder yokes. Long square cut tails stay tucked in; side gussets at waist prevent splitting.

Sizes: 14½, 15, 15½, 16, 16½, 17-inch necks. Ship. wt. 14 oz.; 3, 2 lbs. 8 oz. State size and color.

Button Front Coat Style

Zipper Slipover Style

35 A 3180—Blue Chambray
35 A 3181—Gray or Blue Covert.

35 A 3094—Covert only
Colors: Gray, Blue or Forest Green.

Each .65c; 3 for...\$1.89

Each .82c; 3 for...\$2.40

You Can Buy ALL Your Work Clothes on Time

3 Work Shirts	2.40	Gloves64
Work Pants	1.95	Shoes	2.79
6 prs. Socks85	Cap89
Jacket	3.79	Total	13.31

\$2 a month buys any \$10 to \$14.00 order. See inside back cover for credit details.

How to Measure for Work Shirts, Page 440.



Wards Thrift Quality Work Shirts

Sturdy Fabrics . . . Full Cut Sizes that Allow for all Shrinkage

- 100% American Cotton Covert or Chambray Fabrics.
 - Two Large Button-through Pockets; Pencil Slip.
 - Double Shoulder Yokes; Triple Sewn Main Seams.
 - Interlined Dress Collar. Rounded Corner Cuffs.
- Wards lowest priced Work Shirts, practical for ordinary wear. Will wash well. Not Sanforized-shrunk. Sizes: 14½, 15, 15½, 16, 16½, 17-in. necks. Ship. wt. each 13 oz.; three shirts 2 lbs. 4 oz.

45c

Chambray

49c

Covert

72c

Zipper Front Covert

Standard Duty Original Homesteaders

Medium Heavy Weight Chambray or Covert . . . Full, Roomy Cut Allows for all Shrinkage

- Sturdy 100% American Cotton Shirtings. Wards Quality Tailoring.
 - Made Like Wards Standard Homesteaders Above, But Not Sanforized.
 - Triple Sewn Main Seams Won't Rip. Non-Rip 1-Pc. Sleeve Facings.
 - Comfortable Dress Collar. Double Shoulder Yokes. Big Pockets.
- The best Work Shirt we've seen anywhere for the money, satisfactory for everyday wear. Not quite as closely woven or as long wearing as Wards Sanforized Homesteaders at top of page. Full cut to allow for all shrinkage in washing. Long tails stay tucked in. Ship. wt. each 14 oz.; Three 2 lbs. 8 oz.

55c

Reg. Sizes

64c

Extra Sizes

REGULAR SIZES, 14½, 15, 15½, 16, 16½, 17-in. necks. To measure, see Page 440.
35 A 3068—Chambray. Colors: Blue or Gray. State neck-size and color.
35 A 3089—Covert. Colors: Gray, Blue or Tan. Each .55c; 3 for \$1.62
TALL SIZES: Longer body and sleeves. Sizes: 15, 15½, 16, 16½, 17, 17½, 18-inch necks. State neck-size.
35 A 3097—Blue Chambray
35 A 3056—Gray Covert. 64c; 3 . . \$1.85

Industrial Shirt

Sanforized-Shrunk for Permanent Fit

- Medium Heavy Weight Cotton Fabrics.
 - Triple Main Seams.
 - Button-Thru Pockets.
- Short sleeves for safety and comfort. Double shoulder yokes. Interlined collar. Washable, won't shrink over 1%. Sizes: 14½, 15, 15½, 16, 16½, 17-in. necks. Ship. wt. each 10 oz.; three shirts 1 lb. 12 oz. State neck-size.

57c

35 A 3087—Blue Chambray
35 A 3088—Gray Covert. 57c; 3, \$1.65

CB AS **WARDS 2 439**

DOUBLE DUTY PIONEERS

with double elbows for tough jobs..SANFORIZED-SHRUNK



Medium Heavy Weight Chambray or Covert

Button Front, Regular Sizes Zipper Front, Regular Sizes

74c
EA.

3 for \$2.15

94c
EA.

3 for \$2.75

Wards Double Duty Pioneer Work Shirts give you months extra wear on hard jobs because they are reinforced with a double layer of sturdy fabric where shirts get most wear—at elbows and under forearm. Sanforizing assures a permanent (fabric can't shrink over 1%), and tightens the weave by packing more threads into every inch. Made from 100% American Cottons. Full length tails with side gussets that prevent ripping.

Made with Wards First Quality Tailoring

Two bellows pockets with button-down flaps, securely bar-tacked. Triple sewn main seams. One-piece rip-proof sleeve facing. Interlined dress type collar and rounded corner cuffs. Rust-proof composition buttons are sewn on securely with strong threads. **Regular Sizes:** 14½, 15, 15½, 16, 16½, 17-inch necks. How to Measure below at left. Ship. wt. each 1 lb.; three 2 lbs. 14 oz. **Be sure to state neck-size and color.**

Button Front Coat Style

35 A 3143—Chambray: Blue.
35 A 3142—Covert. Colors: Gray, Tan, Forest Green or Blue. Each 74c; 3 for \$2.15

Zipper Front, Slipover Style

35 A 3152—Chambray: Blue
35 A 3182—Cotton Covert. Colors: Gray or Blue. Each 94c; 3 for \$2.75

Special Sizes for Tall and Stout Men

Button Front **84c** Buy 3 for \$2.47

Ship. wt. each shirt 1 lb.; three shirts 2 lbs. 14 oz. **TALL MEN'S SIZES:** Made with longer body and sleeves for comfort. **Sizes:** 15, 15½, 16, 16½, 17, 17½, 18-inch necks. **State neck-size.**
35 A 3149—Blue Chambray
35 A 3147—Gray Cotton Covert. Each 84c; 3 for \$2.47
STOUT MEN'S SIZES: Cut fuller in body and sleeves for better fit. **Sizes:** 17½, 18, 19, 20-inch necks. **State neck-size.**
35 A 3150—Blue Chambray
35 A 3148—Gray Cotton Covert. Each 84c; 3 for \$2.47



HOW TO MEASURE FOR NECK-SIZE

On a shirt that fits well, measure distance from center of collar button to far end of collar buttonhole.

The number of inches is your size; make no allowance. Sleeve lengths are in proportion to neck-size. Be sure that shirt wanted comes in your size.



Double Duty Sanforized Super Pioneers — 25% Stronger Made of Heaviest Chambray and Covert Used in Shirts

- Double Thickness of Fabric at the Elbows and Under the Entire Forearm.
 - Husky, Sanforized-Shrunk Fabrics Cannot Shrink More than a Fraction of 1%.
 - Button-Flap Bellows Pockets have Extra Capacity; One has Handy Pencil Slip.
 - Rust-proof Composition Buttons Sewn on Securely. Rip-proof Sleeve Facing.
- The heaviest Chambray and Covert successfully used in Work Shirts—that's why these shirts give 25% more wear than other shirts in their price class. Sanforizing tightens and strengthens the weave of the 100% American Cotton fabrics. Main seams triple sewn. Neat interlined collar and cuffs. Full length tails. **Sizes:** 14½, 15, 15½, 16, 16½, 17-inch necks. Don't guess your size; it takes just a minute to measure and be sure. See How to Measure at right, above. Ship. wt. each 1 lb.; 3, 2 lbs. 14 oz.

89c
3 for \$2.59

Sanforized Super Chambray
35 A 3050—Blue Chambray
35 A 3051—Gray Chambray

Sanforized Super Covert
35 A 3052—Blue Covert
35 A 3053—Gray Covert

State neck-size. Each 89c;

Buy Three for \$2.59

Do Your Shopping the Convenient Way — Use Your Credit. Just \$2 a Month Buys a \$14.00 Order. See Inside Back Cover for Details.

Extra Heavy, Double Duty Jean Cloth . . . Sanforized-Shrunk Vat-Dyed Colors Stay Fresh, New Through Many Washings

- Reinforced Double Elbows and Under-Forearms Give You Double Wear.
 - Dressy Uniform Shirt Styling, Plus Stubborn Work Shirt Strength.
 - Two Oversize Bar-tacked Bellows Pockets with Button-down Flaps.
 - Matching Composition Buttons Sewn on Securely. Triple Sewn Main Seams.
- Here's the good looks you want in a Service Shirt, with no sacrifice of strength! Close-weave 100% American Cotton Jean Cloth is one of the toughest fabrics known, and Sanforizing adds still more strength by packing extra threads into every inch of fabric. Can't shrink more than 1%. Colors are slow to soil, cannot fade in tub. Double thick shoulder yokes. Non-rip sleeve facings. Side gussets in tails prevent ripping. **Sizes:** 14½, 15, 15½, 16, 16½, 17-inch necks. See the convenient How to Measure instructions above. Ship. wt. each shirt 1 lb. 1 oz.; ship. wt. three shirts 3 lbs. **Be sure to state neck-size.**

Button Front **98c**
3 for \$2.89

Button Front Coat Style
35 A 3175—Suntan
35 A 3176—Taupe (smoke)
Each 98c; 3 for \$2.89

Zipper Front Slipover Style
35 A 3188—Suntan
35 A 3189—Taupe (smoke)
Each \$1.15; 3 for \$3.37

Zipper Front **1.15**
3 for \$3.37

TRIPLE DUTY PIONEERS

fully reinforced for toughest jobs..SANFORIZED-SHRUNK



BETTER—Reinforced Medium Heavy Weight Fabrics

Covert or Chambray. Regular Sizes

85^c
EA.
3 for \$2.49

Wards Triple Duty Pioneers have a double thickness of tough fabric at the FOUR points of greatest wear, as pictured above. Though they cost slightly more, the extra service they give makes them less expensive in the long run. Made from 100% American Cotton fabrics, famous for wear and washability. Sanforizing contributes extra strength by packing more threads into each square inch of fabric, eliminates all but 1% of shrinkage. Interlined ventilation eyelets. Full length tails.

Made with Wards Strongest Tailoring. Extra capacity bellows flap pockets are bar-tacked to resist strain; left pocket has convenient pencil slot. Triple main seams. One-piece sleeve facings, strongly sewn rust-proof buttons. Interlined dress type collar and non-fraying rounded cuffs.
Regular Sizes: 14½, 15, 15½, 16, 16½, 17-inch necks. How to Measure, opposite page. Ship. wt. each 14 oz.; three 2 lbs. 8 oz. State neck-size.
A 3202—Gray Cotton Covert
A 3203—Blue Chambray. Ea. 85c; 3 for \$2.49



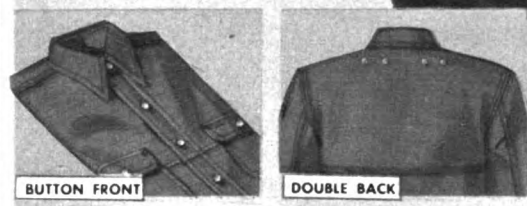
Tall and Stout Men's Sizes

94^c 3 for \$2.75

Ship. wt. each 1 lb.; three shirts 2 lbs. 14 oz.
TALL MEN'S SIZES: Made longer in body and sleeves. Regular Sizes: 15, 15½, 16, 16½, 17, 17½, 18-inch necks.
A 3206—Gray Cotton Covert. State neck-size.
A 3207—Blue Chambray. Ea. 94c; Any 3, \$2.75
TALL MEN'S SIZES: Made fuller in body and sleeves. Regular Sizes: 17½, 18, 19 or 20-inch necks.
A 3208—Gray Cotton Covert. State neck-size.
A 3209—Blue Chambray. Ea. 94c; 3 for \$2.75



VAT DYED, FAST
COLOR CHAMBRAY
Exclusive with Wards



GOOD—Thrifty Triple Duty Shirts Full Cut to Allow for All Shrinkage

Med. Heavy Weight Chambray or Covert. Reinforced Double Thick Elbow and Under Forearm, Shoulder Front, Back. Sixteen Eyelets for Working Comfort. Made of the same sturdy 100% American Cotton fabrics as used in Wards Triple Duty Pioneers described above, but less closely woven because fabrics are not Sanforized. Extra full cut to allow for all shrinkage. Shoulders are reinforced to below armpits; back has full double yoke extending below armpits. Triple sewn main seams. Interlined collar. Large button-through pockets, one with pencil slot. Full length tails stay tucked in. Rounded cuffs.
Sizes: 14½, 15, 15½, 16, 16½, 17-inch necks. To measure, see opposite page. Ship. wt. 13 oz.; 3, 2 lbs. 4 oz. State size.
A 3134—Gray Cotton Covert
A 3135—Blue Chambray. Each 64c; 3 for \$1.87

64^c
3 for \$1.87

Just \$2.50 Down Buys a Complete Work Outfit.

For Example:
3 Shirts \$2.49
Shoes \$2.79
Overalls \$1.15
Jacket \$4.79
Gloves \$1.87
6 Pairs Socks85
Hat \$1.39

See inside back cover for details.

BEST—Fully Reinforced, Fast Color Pepperell Chambray Sanforized-Shrunk For Perfect Fit—Miracle Priced at

• Reinforced with Full Double Front and Back, Double Elbows and Under Forearms.
• Rust-proof Gripper Snaps at Neck and Cuffs. Convenient and Practical.
• Triple Stitched Rip-proof Main Seams; One-Piece Non-Rip Sleeve Facings.
• Interlined Dress Type Collar and Cuffs. Shaped Button-Down Flap Pockets.
Here's the colorfast 100% American Cotton Chambray Shirt you have always wanted—and it's exclusive with Wards. Pepperell quality, vat-dyed to stay new and fresh looking through countless wearings and washings. Medium heavy weight, reinforced at every strain point to give you triple wear or better. Wards best reinforcing—double elbows, double front to below pocket tops, double back to below shoulder blades. Sixteen ventilation eyelets. Full cut, roomy size. Long tails stay tucked in. Choice of button front with strongly sewn rustproof composition buttons, and gripper snaps at collar and cuffs or Zipper Front slipover style. Color: Blue only. Sizes: 14½, 15, 15½, 16, 16½, 17-in. necks. See How to Measure, bottom of opposite page. Ship. wt. ea. 1 lb. 1 oz.; three shirts 3 lbs. State neck-size.
35 A 3219—Button Front Coat Style..... Each 98c; 3 for \$2.89
35 A 3220—Zipper Front Slipover Style..... Each \$1.15; 3 for \$3.37

BUTTON FRONT
98^c
EA.
3 for \$2.89
ZIPPER FRONT
1.15
3 for \$3.37

WARDS 441

WHICH OVERALLS SHALL I BUY?

The Chart Below Provides a Quick, Accurate Comparison of the Strength and Quality Offered in Wards 6 Overall's
All Wards Overall's are made of 100% American Cotton

Thrft Special 77c	Home-steader 94c	Zipper Pocket 1.15	Pioneer 1.10	Super Pioneer 1.29	Powr House 1.49
2.45 Denim Yd. Weighs 6½ oz.	2.20 Denim Yd. Weighs 7¼ oz.	8-oz. Denim Yd. Weighs 8 oz.	8-oz. Denim Yd. Weighs 8 oz.	9-oz. Denim Yd. Weighs 9 oz.	9-oz. Denim Yd. Weighs 9 oz.
ARE THEY SANFORIZED-SHRUNK?					
No	Yes Shrink Less Than 1%	Yes Shrink Less Than 1%	Yes Shrink Less Than 1%	Yes Shrink Less Than 1%	Yes Shrink Less Than 1%
WHAT ARE THEIR SIZE STANDARDS?					
Full Sized Averages 24 Sq. Ft. Fabric Per Garment	Full Sized Same as Overall's At Left	Full Sized Same as Overall's At Left	Extra Full Averages 26¼ Sq. Ft. Fabric Per Garment	Extra Full Same as Extra Full Sizes of Pioneers	Extra Full Same as Pioneer and Super-Pioneer
HOW DO THEY COMPARE IN STRENGTH AND WEAR?					
Fair For ANY Average Job	Good 11% More Strength Than Thrift Specials	Better 10% More Strength Than Home-steaders	Better Same as Zipper Pocket Overall's	Best 12% More Strength Than The Pioneers	Best Same as Our Super-Pioneer Overall's
WHAT ARE THEIR EXTRA FEATURES?					
Larger Than Most Low Priced Overall's	Also come in Choice of Two Stripes	New Pocket Zips Shut practically loss-proof	Widest Selection of Stripes and Sizes	Nickeled rust-proof buttons and buckles	UNION MADE Carry The Union Label

HERE'S HOW TO BUY

Own all the Overall's and Jacket's you need at Wards low prices and pay for them conveniently out of your income. You should have 2 complete overall and jacket outfits—one to wear while the other is laundered. Buy them both on Credit! See details of Wards Payment Plan on inside back cover.

HERE'S HOW TO MEASURE

For Overall's—Waist: Measure around waist over trousers without belt. Inseam: Measure from close up in crotch to desired length. State sizes. For Jacket's—Measure around chest over vest. Hold tape under arms and over shoulder blades. State chest size. Order EVEN Sizes Nearest Your Measure

PIONEERS

1.10

REGULAR AND EXTRA SIZE OVERALLS OR JACKET

DOUBLE EXTRA SIZES—\$1.29

Extra Strong 8-oz. Blue Denim or 8-oz. Blue and White Stripes. Sanforized... Less than 1% Shrinkage

FAMOUS PIONEERS... bought by most men because the extra heavy 8-oz. Denim is strong enough for all but hardest jobs that require our heaviest overall's... for comparison, see Chart above. Better Quality because they're cut extra full for added comfort and wear, the hip and lower jacket pockets have double fabric at bottoms, the suspenders and bib corners are cut from double layers of cloth. Rip-proofed seams, strong bar-tacks. Overall's have 8 big pockets... the low back style has elastic suspender inserts; suspenders button on waist at back. Jacket's have same Pioneer fabric with 5 pockets, 2 button collar.

OVERALLS—STATE BOTH WAIST AND INSEAM SIZES

Order Number	Fabric	Style of Back	Even Waist In.	Even Inseam In.	Shipping Weight	Price
42 A 6232	Blue Denim	High Back	30 to 48	30 to 36	2 lbs. 12 oz.	\$1.10
42 A 6236	Blue Denim	High Back	50 to 56	30 to 36	3 lbs.	\$1.29
42 A 6231	Blue Denim	Low Back	30 to 48	30 to 36	2 lbs. 12 oz.	\$1.10
42 A 6235	Blue Denim	Low Back	50 to 56	30 to 36	3 lbs.	\$1.29
42 A 6233	Blue Denim	Full Back	30 to 48	30 to 36	2 lbs. 12 oz.	\$1.10
42 A 6225	Hickory Stripe	High Back	30 to 48	30 to 36	2 lbs. 12 oz.	\$1.10
42 A 6229	Liberty Stripe	Full Back	30 to 42	30 to 36	2 lbs. 10 oz.	\$1.10
42 A 6227	Express Stripe	High Back	30 to 42	30 to 36	3 lbs. 8 oz.	\$1.10

JACKETS—STATE CHEST SIZE

Order Number	Fabric	Comes in this Size Range Only	Even Chest, In.	Shipping Weight	Price
42 A 6230	Blue Denim	Regular and Extra	36 to 50	2 lbs. 2 oz.	\$1.10
42 A 6234	Blue Denim	Double Extra Only	52 to 58	2 lbs. 6 oz.	\$1.29
42 A 6224	Hickory Stripe	Regular and Extra	36 to 50	2 lbs. 6 oz.	\$1.10
42 A 6228	Liberty Stripe	Regular Only	36 to 44	2 lbs. 4 oz.	\$1.10
42 A 6226	Express Stripe	Regular Only	36 to 44	2 lbs. 2 oz.	\$1.10





Overalls That Fit Properly Will Wear Longer. Measure Before You Order. See Instructions on the Facing Page

HOMESTEADERS

OVERALLS JACKET **94^c** EACH GARMENT

Sanforized-Shrunk . . . Heavy 2.20 Weight Blue Denim Weighs 7¹/₄ oz. To The Yard

HOMESTEADERS have established their place in the working man's economy. Wherever there is need for sturdy, Good Quality Overalls at a low cost, you will find Homesteaders.

Sanforized-Shrunk for Proper Fit—their full sizes and correct fit will stay the same through every laundering because the fabric shrinkage is less than 1%.

Built-in Strength—triple sewn main seams that are practically rip-proof. Heavy bar-tacks at all points where strain occurs. Metal buttons, rust-proofed and riveted on to stay.

Overall Features—deep, full bib with double strong corners. Non-curl suspenders with rust-proofed, easy-to-hook buckles. Elastic suspender inserts in Low Back Overalls. Heavily sewn buttonholes, 8 strong pockets.

Jacket Features—same strong Homesteader construction, 4 pockets, 1-button cuffs and banded collar, roomy coat style sleeves.

Homesteaders will give you strength and service at an economical price. If your job requires stronger overalls and you prefer extra full sizes, choose our higher priced overalls. For comparison, see chart on facing page.

Regular Overall Sizes: Even Waist 30 to 42 in. Even Inseam 30 to 36 in. To measure, see opposite page. Ship. wt. 2 lbs. 4 oz. State waist and inseam sizes tell which is which.

42 A 6146—Low Back (elastic in suspenders) Ship. wt. 1 lb. 11 oz. State chest size.

42 A 6147—High Back Overalls. 94c

42 A 6145—Coat Style Jacket. 94c



ZIP-POCKET

OVERALLS ONLY **1.15** EACH GARMENT

Sanforized-Shrunk . . . Extra Heavy 8-oz. Denim . . . New Zip Bib Pocket

ZIP POCKET . . . popular development in overalls. A deep, wide bib pocket with handy slide fastened closure. Just right for carrying cigarettes, working papers, small tools or any item you use often and wish to keep from dropping out. The zipper is sure working . . . won't jam.

Extra Heavy Denim. Each yard of this deep Blue Fabric weighs 8 oz. . . gives you the same strength, long wear as our Famous Pioneer Overalls, for comparison, see chart at the top of the facing page.

Sanforized-Shrunk. The fabric is cut full throughout seat, crotch and legs to give you extra freedom and comfort that won't shrink out. . . no fabric shrinkage over 1%.

Deep Dyed Indigo Blue. The color is soaked right into every fiber of the yarn . . . won't fade or rub off . . . is slow to show dirt.

Strong Construction. Triple stitching in main seams, bar-tacks at all strain points. Riveted-on, rust-proofed metal buttons, zip pocket plus hammer loop, 5 other pockets.

Even Overall Sizes: Waist 30 to 50 in. Even Inseam 30 to 36 in. To measure, see opposite page. Ship. wt. 2 lbs. 8 oz. State waist, inseam sizes, tell which is which.

42 A 6215—High Back Overalls

42 A 6214—Low Back Overalls. 1.15

COSSACK STYLE ZIPPER JACKET

2.20 wt. Blue Denim weighs 7¹/₄-oz. per yard. 2 pockets, unlined. Fully cut but not Sanforized. About 25 inches in length. Even Sizes: 34 to 48-in. chest. Ship. wt. 1 lb. 9 oz. State chest size.

42 A 6746—Slide Fastened Jacket. 1.49



SUPER-PIONEERS

OVERALLS JACKET **1.29** EACH GARMENT

Sanforized-Shrunk . . . Double Extra Heavy 9-oz. Blue Denim . . . For Longest Wear

SUPER PIONEERS. Made of the strongest Denim used in Wards bib overalls . . . the same double extra heavy, 9-oz. fabric as in Powr House Overalls—but not Union Made. See comparison chart on facing page. Super Pioneers extra strength and wear will cut the cost in the long run.

Extra Full Cut . . . the comfortable fit is a permanent feature because it's Sanforized . . . no fabric shrinkage over 1%.

Strong Construction matches tough fabric. Seams are triple stitched with heavy 3 cord thread to make them rip-proof. Buttonholes rimmed with heavy bar-tack stitching.

In Overalls you get a deep, wide bib for real chest protection. Wide, non-curl suspenders with rust-proof buckles. 8 deep, strong pockets plus a hammer loop.

Jacket is same Super Pioneer fabric strength and construction . . . 2-button band collar, 5 deep pockets and adjustable cuffs.

Overall Sizes: Even Waist 30 to 50 in. Even Inseam 30 to 36 in. To measure, see facing page. Ship. wt. 2 lbs. 12 oz. State waist and inseam, tell which is which.

42 A 6212—High Back Overalls. \$1.29

42 A 6211—Low Back Overalls. \$1.29

42 A 6213—Full Back Overalls. \$1.29

Jacket Sizes: Even chest 36 to 52 in. To measure, see facing page. Ship. wt. 2 lbs. 6 oz. State chest size.

42 A 6210—Coat Style Jacket. \$1.29



UNION MADE POWR HOUSE

Reg. U. S. Pat. Off.



SANFORIZED-SHRUNK 9-oz. BLUE DENIM BIB OVERALLS BAND OVERALLS OVERALL JACKETS

Built by skilled Union craftsmen to high standards of workmanship.

Double Extra Heavy, Extra Strong Denim, weighs full 9-oz. per yard.

Tightly Woven of Long Staple 100% American Cotton Yarns. Deep Dyed a Rich, Dark Indigo Blue.

Sanforized Shrunken for lasting fit, fabric can't shrink over 1% . . .

Supersewn construction . . . triple stitched seams, heavy bar-tacks.

OVERALLS OR JACKET

1.49 Each Garment

BANDTOP OVERALLS

1.29 Each Garment



Wards finest Overalls, for comparison, see Chart on Page 442. Built for toughest wear with double thick suspenders, rust-proofed buckles and riveted metal buttons. High bib with 4-in-1 pocket and 4 other deep pockets, also hammer loop, rule pocket. Jacket: 3-button adjustable cuffs, 5 pockets including inside chest pocket.

Regular and Extra Overall Sizes: Even Waist 30 to 48-in. Even inseam 30 to 36-in. See How to Measure at right. Ship. wt. 2 lbs. 10 oz. State waist and inseam sizes.

42 A 7233—High Back . . . \$1.49
42 A 7232—Full Back . . . \$1.49
42 A 7230—Low Back with elastic insert in suspenders . . . \$1.49

Regular and Extra Jacket Sizes: Even Sizes 36 to 50-in. chest. Ship. wt. 2 lbs. 12 oz. State chest size.
42A7228—Coat style Jacket. \$1.49

Same construction strength and Double Heavy 9-oz. Fabric as Better Quality 10 facing page, but, they're Union Made with the Powr House features above. Cut extra with crotch rise in proportion to inseam . . . Sanforized for permanent proper fit thru out. Adjustable back strap, 6 big pocket hammer loop. Riveted-on, rust-proof fl. suspender buttons. Sturdy belt loops.

Sizes: Waist 30, 31, 32, 33, 34, 36, 38, 40, Inseam 30, 32, 34, 36-in. Ship. wt. 2 lbs. 42 A 6174—State waist and inseam . . .

TO MEASURE FOR OVERALLS, JACKETS AND BIB AND BAND OVERALLS: For Waist, measure around waist over trousers without belt. For Inseam, measure from up in crotch to desired length. State waist and inseam sizes, tell which is which.

OVERALL JACKET AND CHORE COATS: Measure around chest over vest. Hold tape snugly up arms, over shoulder blades in back. Order even nearest your measure. Be sure size ordered is



UNION MADE POWR HOUSE for Men who Wear White

Painters' and Paper-hangers' Overalls, Jackets. Not Sanforized **1.45**

(at left above). Full cut, heavy White boatsail Drill. High Back Overalls: brush pocket, 3 brush loops, 6 other pockets. Jacket: 4 big pockets. Overall Sizes: Even waist 30 to 44-in. Even inseam 30 to 36-in. Ship. wt. 1 lb. 14 oz.
42A6189—Overalls. State waist, inseam. \$1.45
Jacket. Even Chest: 36 to 46-in. Ship. wt. 1 lb. 11 oz.
42A6188—Jacket. State chest size. . . . \$1.45

Carpenters' Overalls . . . **1.79**

Sanforized-Shrunken.
(at right above). Full cut, heavy White Boatsail Drill won't shrink over 1%. 6-compartment bib pocket, 4 big pockets in swinging nail apron that buttons down, heavy double knee patches for double wear. 6 loops for hammers and tools.
Sizes: Even waist 30 to 44-in. Even inseam 30 to 36-in. See How to Measure above. Ship. wt. 2 lbs. 6 oz.
42 A 6159—State waist and inseam . . . \$1.79

ADD SEVERAL PAIRS OF BANDTOPS TO YOUR OVERALL AND JACKET OUTFITS



THRIFT SPECIALS

Medium Weight Blue Denim Bib Overalls or Jacket **77c** Ea.

Serviceable, medium weight Blue Denim, weighs 6½ oz. per yard. Full cut sizes, not Sanforized. Overalls have triple sewn seams with strong bar-tacks. Riveted, rust-proofed buttons, wide flat suspenders, 5 big pockets in Overalls, 4 in Jacket. For Overalls of Greater strength and more features, see the comparison chart on Page 442.

High Back Overalls. Even Sizes: Waist 30 to 42-in. Even Inseam 30 to 36-in. See above. Ship. wt. 1 lb. 14 oz. State waist, inseam.
42 A 6109—High Back Overall. 77c

Coat Style Jacket. Even Sizes: 36 to 44-in. chest. Ship. wt. 1 lb. 11 oz. State size.
42 A 6108—Coat Style Jacket. 77c

Serviceable Band Overalls in Medium Wt. Blue Denim **77c** Ea.

Standard Quality Bandtops in medium weight Blue Denim that weighs 6½ oz. per yard. Sizes are full cut for washability, not Sanforized. Order your right size. Plenty of fine features . . . snap fastened waist, adjustable back strap for a snug, comfortable fit. Triple sewn seams, bar-tack reinforcements. Sturdy belt loops and suspender buttons. 5 pockets plus rule pocket. For stronger Bandtops, see those above and on the opposite page.

Regular Sizes: Waist 30, 31, 32, 33, 34, 36, 38, 40, 42-in. Inseam 30, 32, 34, 36-in. Ship. wt. 1 lb. 13 oz. State waist and inseam sizes.
42 A 6176—Blue Denim Band Overalls. . . 77c



COPPER RIVETED 101'S



Sanforized-Shrunk
All 101 Denim of 100% American Cotton is Sanforized... no shrinkage over 1%. The full sizes and comfortable fit will last the life of the garment. Order Exact Size. To determine size, see Page 444.



GOOD

Strong, Extra Heavy 8-oz. Blue Denim

87c Regular Sizes

Original 101. Strong enough for rough jobs, this Denim weighs 8 per yard, it does not equal the wear resistance of our Better Best Qualities but will give you service. Built with features above.

Pockets plus rule pocket, no suspender buttons.
Regular Sizes: Waist 30, 31, 32, 33, 34, 36, 38, 40, 42 inches. Inseam 30, 32, 34, 36 inches. Ship. wt. 1 lb. 13 State waist and inseam sizes.
A 6164—Regular Sizes.....87c
Extra Sizes: Waist 44, 46, 48, 50 in. Inseam 30, 32, 34, 36 in. Ship. wt. 1 lb. 15 oz. State waist, inseam.
A 6165—Extra Sizes.....98c

BETTER

Stronger 9-oz. Denim Double Extra Heavy

1.00

Over 12% heavier than our Good Quality 101's. Each yard weighs 9 oz. The extra weight means heavier threads and more threads per inch giving greater wear. Recommended on jobs that demand added strength, stamina in cloth.

A stronger fabric, all the 101 features above. 6 big pockets... front swinging pockets of heavy drill are straight cut for easier access. Suspender buttons are riveted on.
Regular Sizes Only: Waist 30, 31, 32, 33, 34, 36, 38, 40, 42 in. Inseam 30, 32, 34, 36 in. Ship. wt. ea. 2 lbs. State waist and inseam sizes and tell which is which.
42 A 6163—Blue Denim\$1.00

BEST

Strongest, Longest Wearing Heaviest 10-oz. Blue Denim

1.10

Actually stronger than our best Bib Overalls! This top quality 10-oz. Denim contains the greatest number of threads per inch, makes the toughest, strongest Bandtop. It will wear longer than either the Good or Better Qualities, and will probably cost you less in the long run.

Recommended for the toughest jobs. All the 101 features above. Deep-dyed Indigo Blue, full cut in roomy sizes with 2 front swinging pockets of heavy drill, 4 other big pockets. Riveted on, rust-proofed suspender buttons will not pull off.
Regular Sizes Only: Waist 30, 31, 32, 33, 34, 36, 38, 40, 42 in. Inseam 30, 32, 34, 36 in. Ship. wt. 2 lbs. 4 oz. State waist, inseam and tell which is which.
42 A 6169—Blue Denim\$1.10

PAY FOR THEM ON WARDS CONVENIENT TIME PAYMENT PLAN. SEE DETAILS ON INSIDE BACK COVER

Blanket Lined Denim Utility Jackets

Wards Eastern Style Catalog Clothing Catalog Is Free. Write for a copy.



16-oz. Blanket Cloth Lining is 25% Reused Sterilized Wool for warmth, bal. Cotton.

Jackets are full 25 in. long, added protection. Wide, Navy Blue Collar of Thickset Corduroy.



Quick working, full length Talon slide fastened front... Easy On—Easy Off!

Wear these Jackets with Bib or Band Overalls for Perfect Winter Work Outfit.

Medium Weight Denim Not Sanforized

1.89

- Full Cut for Comfortable Fit.
- Rip-proofed Seams, Strong Bar Tacks.
- Two Roomy, Warm Slash Pockets.

The Blue Denim of deep dyed 100% American Cotton weighs full 6½-oz. per square yard, will give good service. Expertly tailored in Cossack style, famous for freedom in action. The warm, striped lining is stitched clear through the main seams—won't sag. For a Longer wearing Jacket that is Sanforized, see at right.
Even Sizes: 34 to 48-in. chest. Ship. wt. 4 lbs. State size. See Page 444.
42 A 6752—Blue Denim.....\$1.89

Stronger 8-oz. Denim Sanforized-Shrunk

1.98

- Fabric Won't Shrink More than 1%.
- Two Deep Slash Pockets Plus a Handy Chest Pocket with Talon Zip Closing.

Wards best... in service and appearance. Better than jacket at the left because the 8-oz. Blue Denim of 100% American Cotton has more threads packed into every inch, is stronger... will wear longer. The sturdy side straps adjust easily. The striped blanket cloth lining won't sag... it's stitched through the rip-proofed seams.
Even Sizes: 34 to 48-in. chest. Ship. wt. 2 lbs. 14 oz. State size. See Pg. 444.
42 A 6753—Blue Denim.....\$1.98





PIONEER WORK COATS

- 16-oz. Blanket Lining of 50% Wool, Stitched Through Seams, Won't Sag
- Extra Heavy 8-oz. Denim . . . Strong, Snag-Resistant, Deep Blue Fabric
- Special Features . . . 5 Deep Pockets, Corduroy Collar, 5-Button Front

MACKINAW STYLE

Better Looking
Dark Stitching

2.15

OVERALL STYLE

Extra Heavy
White Stitching

8-oz. Blue Denim Pioneer Coat especially designed by Wards for cold weather comfort and better appearance. Colorful, striped body and sleeve lining of 50% Reused Wool for warmth, balance strong Cotton for long wear. 2 handy muff pockets, 2 extra large lower pockets with button-through flaps, inside pocket. Dress type, Navy Blue Corduroy Collar. Seams sewn in matching color thread, triple stitched main seams. Heavy thread bar-tacks. Matching color composition buttons. About 31 in. long.

Even Sizes: 36 to 50-in. chest. To measure see below. Ship. wt. 3 lbs. 8 oz.

42 A 6377—Blue Denim. State size. \$2.15

Original Pioneer Coat . . . long favored because of the reliable wear in the heavy 8-oz. Denim. Plenty of warmth and strength in the striped, full blanket lining because it's 50% Reused Wool and 50% sturdy Cotton. 2 breast pockets, 1 has a button flap. 2 big lower pockets have double bottoms for longer wear, also an inside pocket. Banded, 2-button Navy Blue Corduroy collar. Triple stitched main seams, husky bar-tacks. Rust-proofed, riveted-on metal buttons. 2-button adjustable cuffs. About 31 in. long.

Even Sizes: 36 to 50-in. chest. To measure see below. Ship. wt. 3 lbs. 14 oz.

42 A 6375—Blue Denim. State size. \$2.15

PIONEER CONSTRUCTION

2.20 Wt. Blue Denim
25% Wool Blanket Lining

1.94

- Made to Pioneer Standards.
- Lining Stitched through Seams to Prevent Sagging.

Right for rugged Outdoor wear. Striped blanket lining is 25% Reused Wool, balance is sturdy Cotton. Pioneer quality features . . . 2-button banded Navy Blue Corduroy collar. 5 deep pockets, one with a button flap. 2 lower pockets have double bottoms for more wear. 3-button adjustable cuffs. 5-button front. About 31 in. long.

Even Sizes: 36 to 50-in. chest. Ship. wt. 3 lbs. 8 oz. State chest size.

42 A 6370—Denim. \$1.94



HEAVY WEIGHT DENIM

Weighs 7 1/4 oz. per Yd.
25% Wool Blanket Lined

1.59

- Famous Homesteader 2.20 Wt. Blue Denim.
- 16-oz. Gray Blanket Lining, 25% Reused Wool.
- 4 Deep Pockets, Button Flap on One Pocket.
- 1-Button Banded, Navy Blue Corduroy Collar.

Warmer and stronger than the Coat at right, this Homesteader offers more strength and service than most Chore Coats at such a modest price. For toughest jobs in cold weather you may want the greater warmth and wear of a Pioneer coat at left. 25% Reused Wool lining (balance strong Cotton) is stitched through the seams, won't sag. Triple sewn seams, sturdy bar-tacks. About 30 in. long.

Even Sizes: 36 to 46-in. chest. To measure see below. Ship. wt. 3 lbs. 2 oz.

42 A 6374—Blue Denim. State size. \$1.59

MEDIUM WEIGHT DENIM

Weighs 6 1/2 oz. per Yd.
Cotton Blanket Lined

1.27

- Lowest Priced Coat . . . 100% American Cotton
- Equal to Any Coat Selling at This Low Price
- Medium Wt. Denim, Weighs 6 1/2 oz. per Yd.
- Two Deep Pockets, Triple Stitched Seams

Your requirements and the price you wish to pay determine your choice of Work Coats. You'll find warmer, stronger coats on the pages . . . This is our economy coat . . . known for serviceable, all 'round wear with adequate warmth for chore work or general utility. Priced to save you more. Sturdy, 14-oz. Cotton Blanket lining. Banded Blue Denim collar buttons riveted on. About 30 in. long.

Even Sizes: 36 to 46-in. chest. To measure see below. Ship. wt. 2 lbs. 12 oz.

42 A 6373—Blue Denim. State size. \$1.27



HEAVY, SANFORIZED FABRICS . . . 25% WOOL LININGS

Heavy 9-oz. Whipcord **2.29**

The firm twill weave of this 9-oz. Cotton Whipcord is extra strong, better looking than Covert. Won't shrink over 1%. Has all the Features at right.

Even Sizes: 36 to 48-in. chest. See Scale below. Ship. wt. 3 lbs. 6 oz. State size.

42 A 6785—Dk. Gray. \$2.29

BOTH HAVE THESE FEATURES

WARMTH: Striped Blanket Cloth linings of 25% Reused Wool, (bal. Cotton) stitched through seams won't sag. Navy Blue Corduroy collars. SERVICE: 5 big pockets . . . 2 flap, 2 muff, 1 inside. Full cut, about 31 in. long.

WEAR: matching composition buttons. Husky seams, bar-tacks at all strain points.

Heavy 8-oz. Covert **1.94**

Good quality 8-oz. Cotton Covert is strong enough for most jobs, has all features at left. If you require a finer coat, choose the Whipcord.

Even Sizes: 36 to 48-in. chest. See Scale below. Ship. wt. 3 lbs. 2 oz. State size.

42 A 6783—Dk. Gray. \$1.94



WARDS 46 WARDS CBA SD

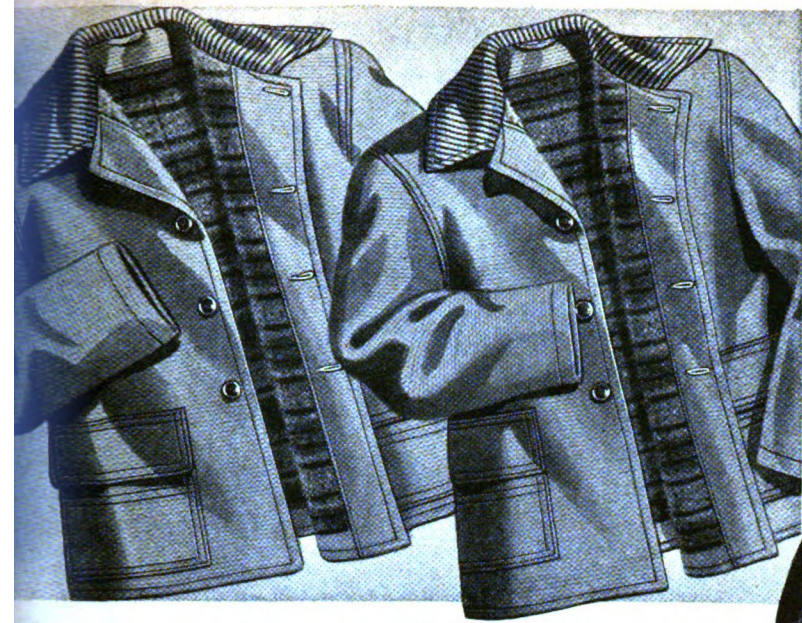


TO MEASURE WORK COATS AND JACKETS

For Work Coats or Jackets measure around chest over vest. Hold Tape snug not too tight, well up under arms and over shoulder blades in back. Order Even Size nearest your measurement. Be sure size is listed.

YOU MAY BUY ON TIME

Only \$2 Down, \$2 Monthly for a \$10 to \$14 Order, start it with a Jacket. See "What you should know about Wool" on Page 356.



HEAVY DUCK COATS WITH 25% WOOL LINING

Bargain Priced
Heavy Duck **2.49**

Oil Slicker
Interlining **2.98**

... Drab Brown Cotton Duck Fabric. Warm Lining of 25% Reused Wool. Double Breasted, Four-Button Front. Comfortable, Dark Brown Corduroy Collar.

... a bargain price for such a durable built coat. Heavy, tightly woven and stands the wear of hard work. Body lining is 25% Reused Wool. Lining is strong Cotton. 2 patch pockets with flaps have double bottoms for extra wear. Strong seams. Coat is 30 inches long.

Sizes: 36 to 48-in. chest. See How to measure on facing page. Ship. wt. 12 oz. **State chest size.**

42 A 6823—Drab Brown Duck... \$2.49

- Extra Heavy 8-oz. Duck with a Heavy Warm Blanket Lining and Oil Slicker Interlining.
- Comfortable Dark Brown Corduroy Collar.
- 2 Double Bottom, Flap Patch Pockets.

For tough work in any weather... this heavy Cotton Duck is wear and snag-resistant. The oilslicker interlining covers the body, shoulders and weather side of sleeves, keeps out wind and rain. Lining is 25% Reused Wool blended with Cotton for strength and warmth. 4-button double breasted front buttons all the way up to neck. Full 32-in. length.

Even Sizes: 36 to 48-in. chest. See facing page. Ship. wt. 4 lbs. **State size.**

42 A 6765—Drab Brown Duck... \$2.98



BLANKET LINED JACKETS

- Tough Fabrics... 8-oz. Covert or 9-oz. Whipcord... Sanforized for Lasting Fit
- Full, Blanket Cloth Linings of 25% Reused Wool Blended with Cotton
- Zipper Front and Chest Pocket, 2 Slash Pockets, Wide Corduroy Collar

8-OZ. GRAY COVERT

Heavy Weight
For Long Wear **2.19**

9-OZ. GRAY WHIPCORD

Extra Heavy
Wears Longer **2.39**

Change your Jacket for colder weather, yet keep all the action freedom you need for working comfort. Of 8-oz. Dark Gray Cotton Covert, full of wear and durability, and with less than 1% fabric shrinkage. The warm lining of 25% Reused Wool mixed with Cotton is stitched through the side seams to prevent sagging. Rustless, slide fastened front zips closed in a second. Comfortable, Navy Blue Corduroy collar. Cossack band bottom with side strap adjustments. Strong seams and bar-tacks.

Even Sizes: 36 to 48-in. chest. 25 in. long. To measure see facing page. Ship. wt. 2 lbs. 2 oz.

42 A 6781—Covert. State size... \$2.19

Better than the jacket at left, because it's stronger, heavier 9-oz. Dark Gray Cotton Whipcord... with less than 1% shrinkage. The lining is a mixture of 25% Reused Wool with Cotton that gives a maximum of wear with generous warmth. Easily operated slide fastener front. Wide Navy Blue Corduroy collar is snug about the neck. Cossack band bottom with side strap adjustments. This jacket combines with trousers of the same fabric to make the fine outfit shown below at left.

Even Sizes: 36 to 48-in. chest. 25 in. long. For a proper fit, measure, see opposite page. Ship. wt. 2 lbs. 6 oz.

42 A 6789—Whipcord. State size... \$2.39



SANFORIZED COVERT OR WHIPCORD OUTFITS

2.10 Shirt... \$1.10
Trousers... 1.15

2-Pc. **3.49** Jacket Above... \$2.39
Outfit Trousers... 1.29

... Dark Gray Cotton Covert of 100% American Cotton with less than 1% Shrinkage. Full cut, roomy coat style with 7-button front, dress type collar, 2 flap pockets. Features: 5 big boatsail drill pockets. Belt loops, suspender buttons. 20-inch cuffs. **Sizes:** 14, 14½, 15, 15½, 16, 16½, 17-in. chest. Ship. wt. 1 lb. 7 oz. **Please state size.** **Even Sizes:** See chart on page 451. Ship. wt. 1 lb. 9 oz. **State waist and inseam sizes.** **Outfits:** Ship. wt. two pcs. 2 lbs. 14 oz. **State neck size, waist and inseam sizes.** 42 A 4004—2-Pc. Covert Outfit... \$2.10 42 A 4003—Covert Shirt only... 1.10 42 A 5039X—Covert Trousers only... 1.15

Sturdy Outfit of durable 9-oz. Cotton Whipcord, Sanforized, only 1% fabric shrinkage. Well sewn seams, bar-tack reinforcements. **Blanket Lined Jacket:** same as 42 A 6789 above at right. Zipper front. Zipper chest pocket, 2 slash pockets. Corduroy collar. **Trousers:** Matching, heavy 9-oz. Whipcord. 5 pockets. Sturdy belt loops, fly and suspender buttons. Waistband lining. 20-in. cuffs. **Jacket Sizes:** 36 to 48-in. chest. **Trousers Sizes:** see chart on Page 451. Ship. wt. 2 pcs. 3 lbs. 14 oz. **State chest, waist and inseam sizes and tell which is which.** 42 A 6773—2-Pc. Outfit... \$3.49 42 A 5045X—Trousers only... 1.29

UNIFORM CAPS. In Covert or Whipcord to match the Outfits above. Sateen lined. Celluloid identification holder. Imitation leather sweatband. Glossy black visor. **Sizes:** 6¾, 6¾, 7, 7¼, 7½, 7¾, 7¾, 7¾, 7¾. **State head-size.** Ship. wt. each 1 lb. 42 A 689—Dark Gray Cotton Covert. 42 A 697—Dark Gray Cotton Whipcord... \$1.00

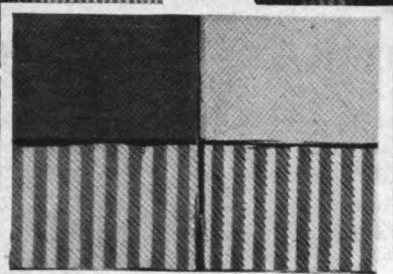
MOLESKIN JACKET

25% Wool Blanket Lined
... Knit Collar and Cuffs

2.39

- Heavy Brown Moleskin.
 - Two Welt Edged Pockets.
 - Adjustable Side Straps.
 - Striped Blanket Lining.
- Action freedom with Winter warmth. Heavy, snag-resistant, tightly woven Moleskin cloth. Colorful blanket lining of 25% Reused Wool with strong Cotton. Adjustable side straps. 5-button front with snap fastened collar. Ribbed knit cuffs and collar. About 25 in. long. **Even Sizes:** 36 to 48-in. chest. See opp. page. Ship. wt. 2 lbs. 4 oz. **State size.** 42 A 6819—Seal Brown... \$2.39





Both Suits Come in These 4 Fabrics
 Blue Denim White Herringbone
 Blue, Brown Stripe Blue, White Stripe

WARDS BEST . . . One-Piece Work Suits

SANFORIZED 8-OZ. 100% AMERICAN COTTON FABRICS

1. Free Swing Action Back with Deep Shoulder Pleats
2. Concealed Slide Fastened Front . . . Convertible Collar
3. Big Hip Pockets with Double Bottoms for Strength

UNION MADE

2.85

EXTRA FEATURES

2.79

- Sanforized-Shrunk—the full sizes will last . . . no fabric shrinkage over 1%.
 - Rip-proof Seams, Bar-tack Reinforcements.
 - Side openings for Access to Inside Clothes.
- Extra Heavy 8-oz. fabrics for Longer wear tailored by skilled Union Craftsmen to highest standards. Made with all features above, 7 pockets plus special rule pocket, hammer loop.
- Even Sizes: 36 to 46-in. chest. Inseams in proportion. See How to Measure above. Ship. wt. 3 lbs. 4 oz. State size.
- 42 A 6295—Blue and White Hickory Stripe. Shown on figure above.
- 42 A 6297—Blue, Brown Stripe Denim
- 42 A 6298—White Herringbone Twill
- 42 A 6296—Deep Blue Denim
- Union Made Suit. Each. \$2.85



- Features Above . . . Adjustable Side Straps for Proper Fit . . . one Flap chest Pocket.
 - Fabrics Can't Shrink More than 1%.
 - Rip-proof Seams, Bar-tack Reinforcements.
- Same Extra strong fabrics and full sizes as suit at left, but not Union Made. 7 big roomy pockets, side openings for access to inside garments, a hammer loop and rule pocket.
- Even Sizes: 36 to 46-in. chest. Inseams in proportion. To Measure, see above. Ship. wt. 3 lbs. 4 oz. State size.
- 42 A 6284—Blue and Brown Stripe Denim. Shown on the figure above.
- 42 A 6283—Deep Blue Denim
- 42 A 6285—White Herringbone Twill
- 42 A 6282—Blue and White Hickory Stripe. Each. \$2.79

Stitched Letters for 1-Pc. Work Suits

49c
 18 Letters or less

HEIGHT: Up to and including 2 in. STYLES: Block or Script. COLORS: Red, Brown, Blue, Maroon, Yellow, Green, Orange or Black. Print wording wanted. State color, style, height of letters. To order, add No. 5 before number as (542 A 6282). 4 days extra for delivery.

18 Stitched Letters or Less for Name in back. 49c

Name over Pocket in Front in 5 letters or less. 10c

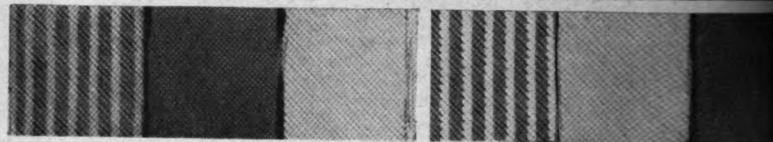
Extra Letters for Front or Back of Garment. Each. . . 2c



448 WARDS CB AS



Concealed Slide Fastened Front



Blue, Brown Blue Denim White Drill Hickory Stripe White Drill Blue Denim

BETTER . . . Quality Suits

Sanforized Shrunk Slide Fastened Front **2.29**

Better than the suits at right because the heavy weight 100% American Cotton fabrics won't shrink over 1%. For extra heavy weights, see "Best" at left. 7 pockets, hammer loop, side openings for access to inside. Even Sizes: 36 to 46-in. chest. Inseam in proportion. Ship. wt. 2 lbs. 12 oz. State size.

42 A 6265—Blue and White Hickory Stripe shown on the figure above.

42 A 6268—Blue and Brown Striped Denim

42 A 6267—Plain White Cotton Drill

42 A 6266—Deep Blue Denim.

Better Quality Suits, Each. \$2.29

GOOD . . . Quality Suits

Not Sanforized Button Front **1.59**

Built to give you good service at low cost. Heavy fabrics are 100% American cotton. The riveted-on buttons are covered to prevent scratching. 6 pockets, hammer loop, side openings to inside. Full roomy sizes. Even Sizes: 36 to 46-in. chest. Inseam in proportion. See below. Ship. wt. 2 lbs. 10 oz.

42 A 6274—Gray Cotton Covert shown on the figure above. State size.

42 A 6269—Blue and White Hickory Stripe

42 A 6271—White Cotton Drill. State size

42 A 6270—Deep Blue Denim. State size

Good Quality Suits, Each. \$1.59

How to Measure 1-Piece Work Suits. Measure around chest over vest. Hold tape measure well up under arms and over shoulder blades in back. Order Even Sizes Nearest your chest measurement and be sure the size you order is listed under the garment you select.



Sanforized Gabardine

100% American Cotton, can't shrink over 1%, highly mercerized for luster and wear. Unbreakable rubber visor. Cotton fleece inband. Sizes: 6 3/4, 6 7/8, 7, 7 1/4, 7 1/2, 7 3/4, 7 7/8, 8. Ship. wt. 1 lb. 13 oz. State size.

35 A 9658—Tan. Ship. wt. 1 lb. State size.

35 A 9659—Navy Blue. Each 54c

Narrow Wale Corduroy

Four-piece crown; heavy Cotton Twill lined. Cottonfelt lined earlaps. Stitched brim holds its shape. Sizes: 6 3/4, 6 7/8, 7, 7 1/4, 7 1/2, 7 3/4, 7 7/8, 8. Ship. wt. 1 lb. 13 oz. State size.

535 A 9608—Navy Blue (black lining).

535 A 9609—Tan (dark tan lining) 97c



Sturdy Shop Cap

100% American Cotton Fabrics. **21c**

- Union Made.

Stitched 2 1/2-in., soft, flexible sail cloth visor. 1-pc. pleated top. Washable. Colors: Navy Blue, Gray, Tan, Olive, Maroon, Yellow, Green, Orange or Black. Print wording wanted. State color, style, height of letters. To order, add No. 5 before number as (542 A 9640). 4 days extra for delivery.

35 A 9640—Otis Stripe

35 A 9641—Gray Covert

35 A 9642—Blue Denim

Choice. Ea. 21c; 3 for 59c

Brighton Style Cap

Heavy 32-oz. Wool Melton Cloth. **\$1.00**

All Reprocessed Wool. Gives cold weather warmth and protection. Red Cotton Flannel lined. Coney fur lined earlaps. Unbreakable canvas visor.

Color: Navy Blue. Sizes: 6 3/4, 6 7/8, 7, 7 1/4, 7 1/2, 7 3/4, 7 7/8, 8. Ship. wt. each 1 lb. State size.

35 A 9680—Each. \$1.00

Mackinaw Plaid

DuPont Unbreakable Rubber Visor. **74c**

- Coney Fur Earlaps.

Made from Woolrich cloth—35% New Wool, 25% Reprocessed Wool, 35% Reused Cotton. 5% Rayon, Cotton, Tan Cotton Suede cloth lined.

Color: Red Plaid. Sizes: 6 3/4, 6 7/8, 7, 7 1/4, 7 1/2, 7 3/4, 7 7/8, 8. Ship. wt. ea. 10 oz. State size.

35 A 9644—Each. 74c